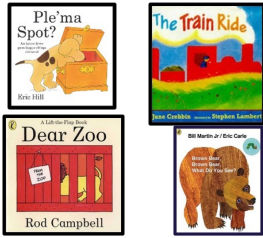


Curriculum coverage

Examples of Texts:

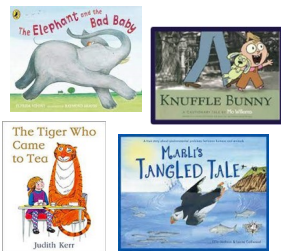
Nursery



Reception



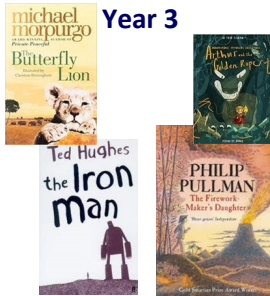
Year 1



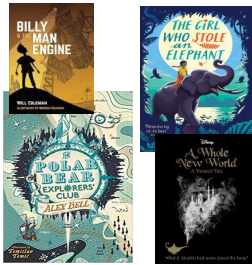
Year 2



Year 3



Year 4



Year 5



Year 6



Ignite Wonder

At Beacon, to ignite wonder in reading and inspire a love of literature, opportunities will include:

- * Language rich learning environments which foster a love of reading through inspirational reading areas, access to high quality books, newspapers and magazines .

- *A whole school ethos in which books and 'good reads' are celebrated and enjoyed by the whole school community.

- *Visits from authors and illustrators

- *School trips to the local library or book shops



Beacon

Shine brightly as a reader



Bebrave

Bebrilliant

Believe

Bebrave ADVENTURE

Exposes our children to a rich and diverse world that is full of colour, music, creativity and celebration. Providing our children with the opportunity to see a world beyond their own, that will inspire and influence their future choices.



Intent

At Beacon Academy, reading is a top priority. Members of staff provide the children with vocabulary rich environments, high quality texts and inspirational learning opportunities. We are committed to helping the pupils:

- * Develop a love of books and read expressively with accuracy, fluency and understanding.
- * Apply their knowledge of phonics to decode unfamiliar words with increasing speed.
- * Engage with a wide range of texts and feel confident in their ability to make predictions, summarise and infer using evidence to support their opinions.

Vision

At Beacon Academy, we believe that reading is an essential life skill and we are committed to enabling our children to become lifelong readers.

At the heart of our strategy is our drive to foster a love of language and literature through the use of quality texts and books; to inspire, excite and engage our children, plus equip them with the skills to question, predict, infer and comprehend, through high quality discussion with the teacher.

We sincerely believe that reading is a skill that enables children to develop their learning across the whole curriculum and lays the foundations for future success in study and employment.

Implement

* Adopting the Read Write Inc. approach, phonics is taught daily in the Early Years, KS1 and to those who require it in KS2. The phonic screening check is taken by Year 1 during the summer.

*Using an excerpt from a carefully selected and high-quality text, Key Stage 1 and 2 engage in whole class reading lessons. This enables the teacher to model a range of skills and exposes the pupils to rich, extensive vocabulary.

* Lessons are thoughtfully planned and sequenced so that children can frequently develop skills in all areas.

* Children from Year 2 to 6 use Accelerated Reader to increase their level of independence.

* All classes have a 'daily reader' that has been chosen to excite, engage and challenge.

Impact

We firmly believe that reading is the key to all learning so the impact of our curriculum goes beyond statutory assessments. Prior to leaving Beacon Academy, it is our aspiration that:

* All children have developed a life-long love of reading and books.

* All pupils are fluent, confident and able readers, who can access texts for pleasure and enjoyment, as well as use their reading skills to further their knowledge in all areas of the curriculum.

*Children are confident in their ability to discuss texts from a range of genres, recommend books to their peers, evaluate the authors use of language and then appreciate the impact this can have.

BeBrilliant CULTURAL DIVERSITY

Enables our children to develop a growth mindset, by exposure to challenging experiences that allow our children to question and explore opportunities that will enable them to become confident and resilient in all areas of their lives.

Believe POSSIBILITIES

Allows our children to explore the world around them, knowing that the experiences they gain will enhance their lives and open doors to new adventures.

