



We have had another wonderful week at Beacon, with our children Shining Brightly at every opportunity. Amongst all of the fantastic learning that has taken place this week, I have been lucky enough to see some incredible writing from across the school this week. It has been a pleasure to see the progress that our children have made from the beginning of the academic year and the quality and content of the writing has been excellent.

Top story this week

We have had several visitors into school this week. Falmouth University have been working alongside our year 5 children looking closely at the career pathways and further opportunities available to them. Farm and Country have also been working alongside our year 1 children educating them all about where their food comes from and what that journey looks like and the Cornish Pirates have continued to provide coaching for our year 4 children.

Next week we start our programme of after school club opportunities for our children. Once again, we are offering a wonderful wide range and variety of extra curriculum opportunities for our children.

We are looking forward to seeing our year 5 families on Thursday when they will learn all about the incredible events and opportunities that our children will be taking part in during their incredible Manchester adventure. If you are unable to make this meeting, please speak to your child's class teacher and they will be able to arrange another time to talk through the itinerary at a time that is convenient to you.

Please see below the key dates for this term. Wishing you a lovely weekend.

Kaye

★ Key Events for next week– Reception and KS1

	Monday	Tuesday	Wednesday	Thursday	Friday
Reception	PE- more dance fun!	Time to innovate.	How many buttons on the Gingerbread Man?	Funky French Thursday	Drop everything and read
Year 1	Maths – shapes	Write your own suspense stories!	PE - Gymnastics	Beacon Visits and Funky French Thursday	Drop everything and read
Year 2	Super Supertato Writing	Gymnastics	Exploring shapes in Maths	Funky French Thursday	Drop Everything and Read

Key Events for next week– KS2 and ARB

	Monday	Tuesday	Wednesday	Thursday	Friday
Year 3	History: The Discovery of Tutankhamun's Tomb	Independent writing plan. What amazing openers are you going to use?	Maths fun! Can you remember what Unit fraction and Non-unit fraction is?	Funky French and PE!	Drop Everything and Read!
Year 4	Writing our Innovation – The Resolution	PE – Rugby with Cornish Pirates	Planning our own character flaw story	Funky French Thursday and Beacon Visit	Drop Everything and Read!
Year 5	Math – Multiplying by 10, 100 and 1000	Science – Forces	Writing – Meeting Tale. Independent Application.	PE - Hockey	Drop Everything and Read
Year 6	Planning our own journey tales!	PE - Basketball	History – Allies and Axis Powers	Funky French Thursdays	Drop Everything and Read
Cosmonauts	PSHE Keeping ourselves healthy	Amazing Art	Sensational Science	Cooking	Computing

BeBrave Believe BeBrilliant

EYFS 'Highlight of the Week'



Nursery



We have been busy threading our way to the stars. We had practiced our pinchy grip to hold the bead carefully while we pushed our star thread through. We have also been looking for stars and counting how many we can find. We even found small stars hiding on bigger stars. We carefully counted them one at a time.



Reception

We have really enjoyed continuing to learn all about Lunar New Year. We have explored how people prepare for the special celebration. We then role played these preparations by making our own lanterns and cleaning to sweep out the bad luck and make room for the good luck coming our way.



BeBrave



Believe



BeBrilliant



KS1 'Highlight of the Week'



Year 1

Year 1 have been busy this week learning about everyday materials, what they are made of and their different properties. They undertook an experiment to find the best material to make a coat for a toy. The children worked scientifically to conduct the experiment and discovered that tin foil was the best material as the water ran straight off.

Year 2

Year 2 have been getting really stuck into our new R.E. unit: Judaism, this week. The children have been fascinated to learn about synagogues and the Jewish faith. In maths we've been exploring symmetry in 2D shapes and can now confidently describe the key properties of 2D shapes. In our funky French we've been exploring sounds and colours and we've also had an exciting Beacon visit to Christmas Island!



BeBrave Believe BeBrilliant

Lower KS2 'Highlight of the Week'



Year 3

Another outstanding week for year 3! This week we have been learning all about miracles in our new RE unit: Incarnation, God the Son. We looked at 4 different stories from the New Testament where Jesus had performed amazing acts of healing on 4 different men. We discussed whether we believed they were miracles and then thought about what Christians believed they were.

Brilliant Work Year 3!

Year 4

What a great week this has been in year 4. Children have begun to innovate their version of The Kapok Tree; they have loved looking at characterisation of the key characters within their reading text; in maths, they continue to persevere with their times tables knowledge; and have loved exploring all about tropical rainforests in Geography.

Tuesday afternoons continue to be a highlight as we are taught rugby by the Cornish Pirates. This week, children practised throwing, catching and intercepting the ball.



BeBrave



Believe



BeBrilliant



Upper KS2 'Highlight of the Week'



Year 5

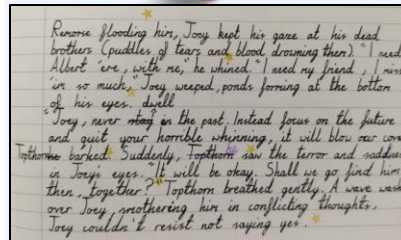
Another fantastic week in year 5! This week we were lucky enough to have a visit from Falmouth University, who opened our eyes to some of the incredible possibilities out there - for everyone's interests, hopes and dreams. Children were then set an extremely challenging, engineering problem, to see who could make the most money - this really tested the children's resilience and encouraged them all to **Believe** and **Be Brave**. What a wonderful afternoon.

We look forward to **Being Brilliant** next week and taking on more challenges. Have a fantastic weekend everyone.

Year 6

What a great week we have had in year 6: children have innovated their story of War Horse and produced some amazing results; they have looked at how to compare and add fractions with different denominators in maths; in reading, they have completed their unit linked to characterisation; and also begun exploring their History unit linked to WW2.

Next week, children will continue to innovate their stories by writing their own journey tales. If this week is anything to go by, we are in for some fantastic results.



BeBrave

Believe

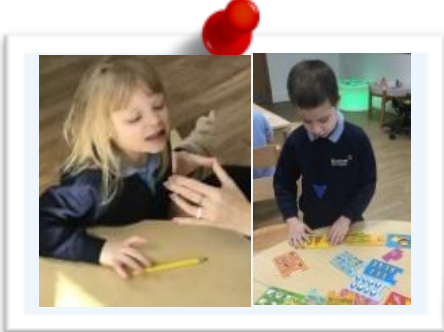
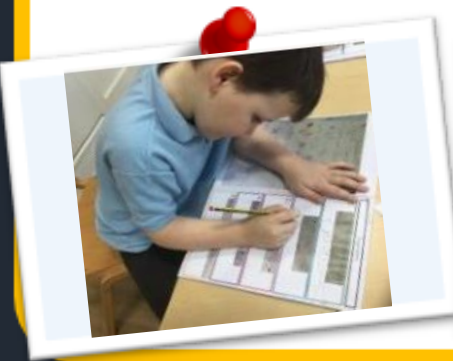
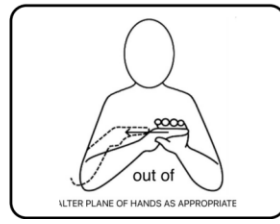
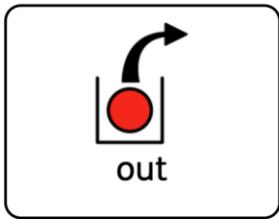
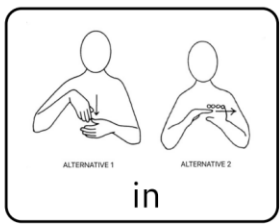
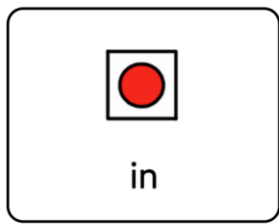
BeBrilliant

Cosmonauts 'Highlight of the Week'



We have been very busy in Cosmonauts this week. We have been doing lots of work around our class stories '10 Little Superheroes' and 'Superworm' as well as our phonics and maths learning. In Science, we are thinking about animals and matched up adult animals with their babies. We used mirrors to look carefully at our faces and then drew self-portraits for our superhero topic. We have also been making the most of the lovely weather this week with lots of outdoor learning.

Core word of the week





















BeBrave

Believe

BeBrilliant

Who has SHONE BRIGHTLY this week? Aspirations – dreaming big dreams

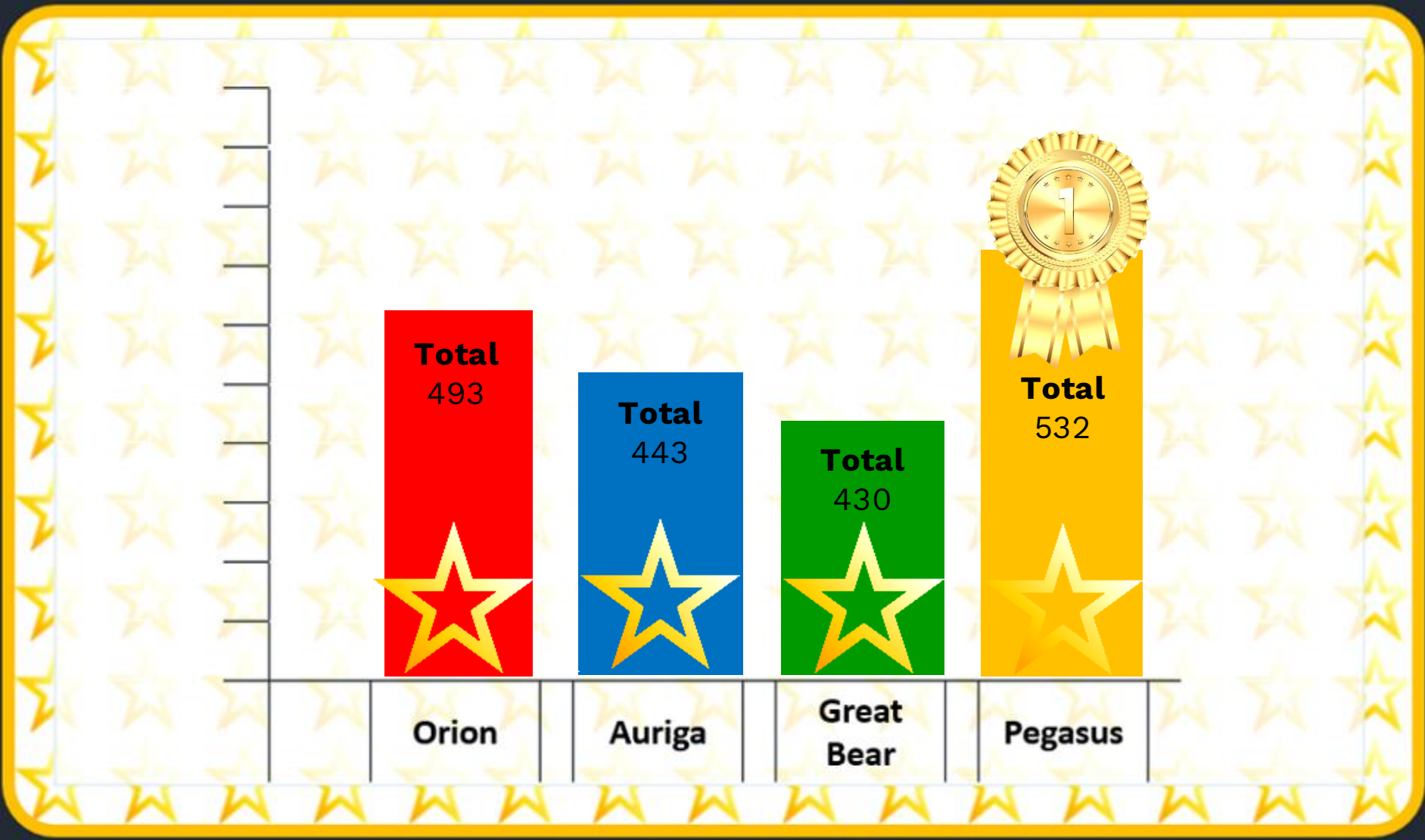
Space Voyagers (YR)		Luna Prickett	Pioneers (Y3)		Izzy Frost
Space Travellers (YR)		Jack Robertson	Discoverers (Y3)		Elsie-Mae Garcia
Space Adventurers (Y1)		Olivia O'Brien	Supernovas (Y4)		Stella Lino
Space Explorers (Y1)		Reuben Crowle	Constellations (Y4)		Riley Moya
Spaceships (Y2)		Brodie Brown	Comets (Y5)		Reuben Eddy
Rockets (Y2)		Audrey Corrigan	Meteors (Y5)		Riley Smith
Cosmonauts (ARB)		Ellie Williams	Aviators (Y6)		Poppy Pearce
Shine			Astronomers (Y6)		Molly Harris
			Astronauts (Y6)		Lincoln Bryant

BeBrave 

Believe 

BeBrilliant 

House Points! 

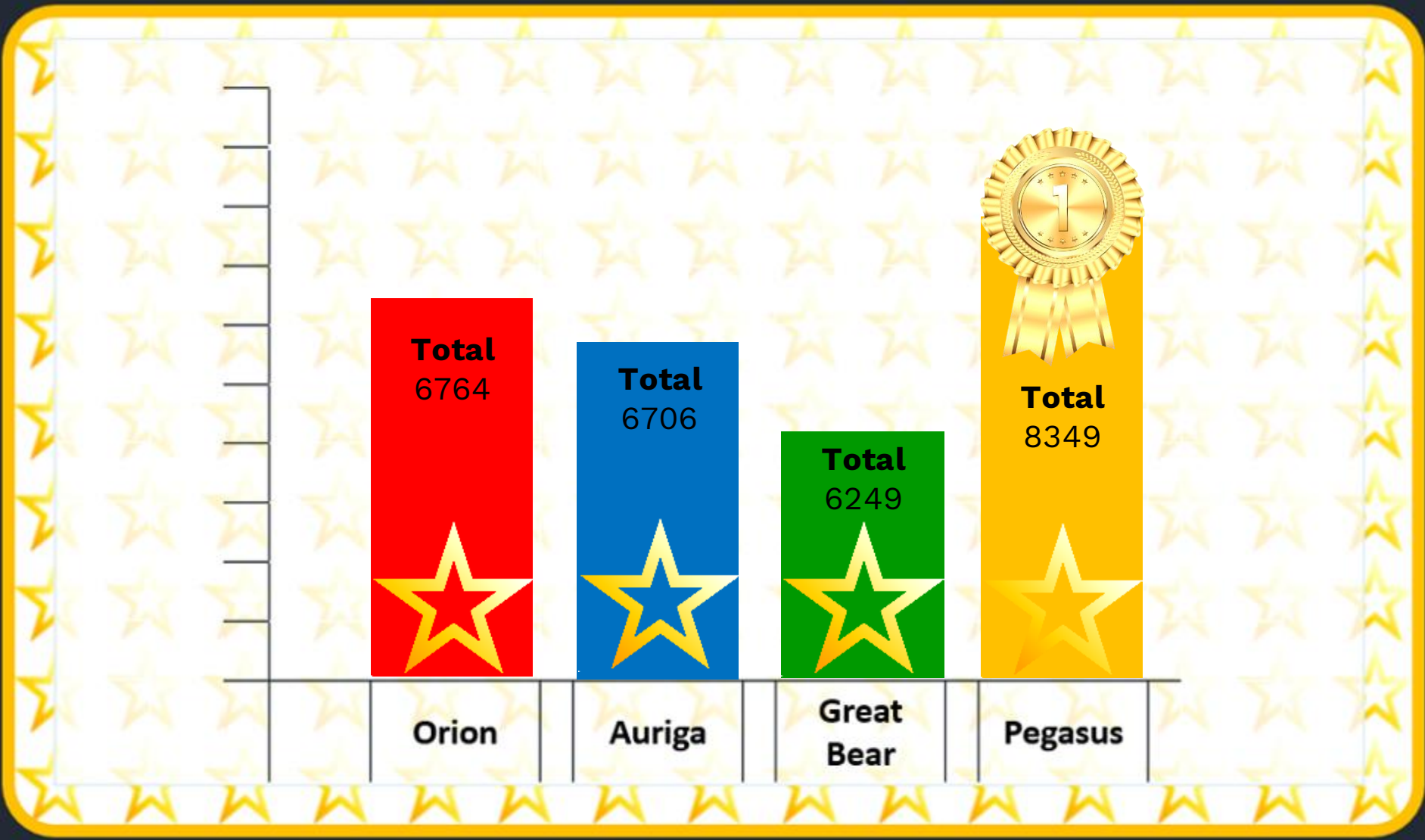


BeBrave 

Believe 

BeBrilliant 

House Points! 



Attendance Information

How is a Penalty Notice paid?

Penalty notices can be paid by card by calling the office on 01872 324201. Alternatively, payment can be made by cash or cheque at any Cornwall Council Information Service. If the 21st/ 28th day for payment falls on a weekend or bank holiday, payment will be accepted at the same rate on the following working day.

What happens if a Penalty Notice is not paid?

If a Penalty Notice is not paid within the 28 days of issue (as per the dates listed on the Penalty Notice), Cornwall Council will progress the matter to the Magistrates' Court, for the offence of failing to ensure regular attendance, NOT for failure to pay the fine.

If found guilty:

- under section 444(1), it can result in the parent being fined up to £1000
- under section 444(1A), it can result in the parent being fined up to £2,500 and/or receiving a custodial sentence of up to 3 months

Cornwall Council may also apply for costs incurred in taking the matter to court.

Contact us

Education Welfare Service, New County Hall, Treyew Road, Truro, TR1 3AY

educationwelfare@cornwall.gov.uk

01872 324298

If you would like this information in another format or language please contact:

Cornwall Council, County Hall,
Treyew Road, Truro, TR1 3AY

e: customerservices@cornwall.gov.uk

t: 0300 1234 100



Together 
for Families

Penalty Notices

A guide to Education Welfare Services for parents and carers



 www.cornwall.gov.uk/togetherforfamilies

Attendance Information

What is a Penalty Notice?

A penalty notice is a fine that can be issued under section 444A and section 444B of the Education Act 1996. The fine is issued per parent, per child for:

- Leave of absence of 10 school sessions/5 days or more within any rolling 10 school week* period during term time, without authorisation from the school. This can include unauthorised absence for a holiday.
- Unauthorised absence of 10 or more sessions/5 days within any rolling 10 school week* period where a parent fails to provide an explanation for the absence, or where an explanation is provided but the school consider it insufficient to authorise the absence.
- Unauthorised lateness of 10 school sessions within any rolling 10 school week* period, whereby a child arrives at school after the registers have closed.

NB a penalty notice can be issued for any combination of the above reasons where there are 10 sessions/5 school days or more of unauthorised absence within any rolling 10 school week period. The unauthorised absence can be consecutive or non-consecutive and can span over two terms (including between academic years).

Or when

- A pupil is observed in a public place during school hours in the first five school days of a period of exclusion from school, without reasonable justification.

* a school week is any week in which a school meets at least once.

Who can be issued with a Penalty Notice?

Parents and carers of a child can be issued with a Penalty Notice. The definition of a 'parent' as set out in section 576 of the Education Act 1996: By virtue of this section 'parent' includes: all natural parents, whether they are married or not; any person or body who has parental responsibility for a child (as defined by the Children Act 1989) and any person who, although not a natural parent, has care of a child. Having care of a child means a person who lives with and looks after a child, irrespective of what their relationship is with said child.

How much is a Penalty Notice fine?

As of the 19th of August 2024, a penalty notice is £80 if paid within 21 days. If the fine is not paid in 21 days, it will rise to £160 if paid within 28 days of being issued.

If a second penalty notice is issued to the same parent for the same child within a three-year rolling period, the fine will automatically rise to £160 with no option to pay the lower rate of £80.

If a parent then commits a third offence in a three-year rolling period, Cornwall Council will need to consider other enforcement optional options available. This could include prosecution under section 444(1) or section 444(1A) of the Education Act 1996. If found guilty a parent would receive a criminal record and substantial fine.

Penalty Notices are issued per parent, per child.

Therefore, if there are two parents and two children, the fines will total £320 if paid within 21 days or £640 if paid after 21 days but within 28 days (or for a second offence).

Can a Penalty Notice be paid in instalments?

No. Penalty Notices must be paid in full, within the designated dates. However, if a parent has more than one child and is therefore issued with more than one fine, they can pay the fines separately if they wish.

Who is responsible for issuing Penalty Notices?

It is a Headteacher's decision whether or not to authorise an absence and, if their decision is not to authorise, they have the right to request a Penalty Notice in line with their attendance policy process. Cornwall Council's role is to check that the evidence submitted is compliant with Cornwall Council's Code of Conduct for Education Related Penalty Notices and, if so, to issue as appropriate.

Can a parent appeal a Penalty Notice?

There is no statutory right of appeal once a Penalty Notice has been issued. If you believe that the Penalty Notice should not have been issued, you should make contact with the school or academy that your child attends at your very earliest convenience after receiving the Penalty Notice. If you wish to discuss the Penalty Notice procedure, you can contact Cornwall Council's Education Welfare Service on **01872 324298**, or email educationwelfare@cornwall.gov.uk

BeBrave

Believe

BeBrilliant

SAFEGUARDING



CORNWALL COUNCIL
one and all • oon hag all

Together for Families

The deadline for applications is 15 January 2025

Do you have a child born **between 1 September 2020 and 31 August 2021?**

If so, you will need to apply for a place in a reception class in September 2025 for your child by the deadline of **15 January 2025**.



Please note: you will need to apply even if your child attends a school's nursery or pre-school class. If a school is oversubscribed the fact that a child attends a school's nursery or pre-school, or a local nursery or pre-school, does not automatically guarantee a place at that school. The school's oversubscription criteria will be used to allocate places. Visit our website or contact us for more information.

Visit www.cornwall.gov.uk/admissions for more information and to access the online application system.



scan me



www.cornwall.gov.uk/admissions

Applying for a **reception class** place for **September 2025**

Special Educational Needs

If an Education, Health and Care (EHC) Plan has been issued for your child you do not need to complete an application form. Please contact the Statutory SEN Service for more information: Tel: 01872 324242 Email: statutorysen@cornwall.gov.uk

1 Decide on your preferred schools

You are strongly advised to name **three** preferences on the application form. **Naming a second or third preference does not give you any less chance of getting a place at your preferred school.** When making your decision you should...

...think about **how you will get your child to school.** Go to www.cornwall.gov.uk/schooltransport for more information on whether your child would be entitled to home to school travel assistance.

...look at the **admission arrangements** on our website that will be used to allocate places for each school.

...consider naming your **nearest or designated school** as one of your preferences. You can find your nearest or designated school on our website.

...look at the detailed **admissions information** on our website, also available on request.

2 Submit your application by 15 January 2025

Apply online at www.cornwall.gov.uk/admissions

3 Wait to find out which school you have been allocated

If you applied on time you will be notified of your allocation on **National Offer Day: 16 April 2025. Apply on time!** Late applications will only be dealt with after National Offer Day and there may not be any places left at your preferred schools.

Dates for the diary!

Monday 20th January	<ul style="list-style-type: none"> • Y6 Brainy Breakfast starts • Clubs begin
Thursday 22nd January	<ul style="list-style-type: none"> • Y5 Manchester Family Residential Meeting – 3:30pm
Monday 27th January	<ul style="list-style-type: none"> • Chinese New Year
Wednesday 29th January	<ul style="list-style-type: none"> • Chinese New Year Celebration Lunch
Monday 3rd February	<ul style="list-style-type: none"> • Y4 Oxford Family Residential Meeting – 3:30pm
Tuesday 4th February	<ul style="list-style-type: none"> • Y3 Bristol Family Residential Meeting – 3:30pm
Wednesday 5th February	<ul style="list-style-type: none"> • Y6 London Family Residential Meeting – 3:30pm
Monday 10th – Friday 14th February	<ul style="list-style-type: none"> • NO CLUBS
Monday 10th February	<ul style="list-style-type: none"> • Parent Consultations • World of Work Week
Tuesday 11th February	<ul style="list-style-type: none"> • Parent Consultations • Safer Internet Day
Thursday 13th February	<ul style="list-style-type: none"> • Internet Safety Presentation Workshop for families – 3:30pm
Friday 14th February	<ul style="list-style-type: none"> • Aspirations Day • Reception to Hall for Cornwall – Gruffalo's Child
Monday 24th February	<ul style="list-style-type: none"> • INSET DAY – SCHOOL CLOSED TO PUPILS

Dates for the diary!

Tuesday 4th March	<ul style="list-style-type: none">• Y5 final family meeting for Manchester residential
Wednesday 5th March	<ul style="list-style-type: none">• St Piran's Day
Friday 7th March	<ul style="list-style-type: none">• World Book Day
Monday 10th – Wednesday 12th March	<ul style="list-style-type: none">• Manchester residential
Friday 21st March	<ul style="list-style-type: none">• Comic Relief
Monday 24th – Friday 28th March	<ul style="list-style-type: none">• Last week for clubs
Wednesday 2nd April	<ul style="list-style-type: none">• The Royal Beacon Show
Monday 7th – Monday 21st April	Easter Holidays

Extra notifications 



Open from 8:00 – 8:30 daily
(Booking required)

Our free breakfast club operates during term time and is available to all pupils. Starting at 8:00 AM until the start of school we offer the children a selection of healthy breakfast options such as toast, cereals, fruit, water, and milk. The children will then have the opportunity to enjoy reading games puzzles and other to activities.

Sponsored
by



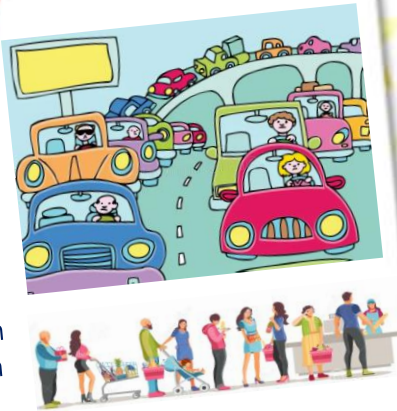
FREE for all children 

Beacon
Shine brightly 

Extra notifications

End of day pickups

We all experience problems from time to time collecting at the end of school day, the long queue, stuck in a traffic jam etc, so if you find the playground empty when collecting your child at the end of the day, please collect them from wraparound – situated in Spaceship class via the Y2 playground.



IMPORTANT

We continue to be so proud of how well our children are responding to their learning and the progress they are making. In order to do this, it is so important that our children come to school with a positive attitude to learning in the correct school uniform and on time. Please talk to our team if we can help you with any aspect of this.



A Polite Request.

If you need to get a message to your child during the school day, please call the main office before **2:30pm** to ensure the message is passed on.



IMPORTANT REQUEST

Can we please ask parents when collecting children from school that you do not park in the bays above the bungalows. We had one resident today that could not park her car near her bungalow and due to being disabled this caused problems for her. Thank you for being respectful to our neighbours.

IMPORTANT

For safeguarding purposes children should not be wearing smart watches in school.



BeBrave

Believe

BeBrilliant

Young Carers



In partnership with
Believe in
children
Barnardo's

AM I A YOUNG CARER?

If any of these sound like you,
you may be a Young Carer...



- Practical tasks -**
cooking, housework,
shopping and
gardening.
- Physical care -**
helping the cared for
in/out of bed, around the
house, outside the home.
- Emotional support -**
listening, talking and
showing empathy.
- Personal care -**
undressing/dressing,
bathing, using the toilet.
- Managing the family budget -**
paying bills, seeking benefits,
working to contribute
financially.
- Supporting with
Communication -**
Making calls, relaying needs
to professionals, helping a
sibling communicate.
- Dealing with Medication -**
collecting prescriptions,
giving medication,
attending appointments.
- Supporting family
members during crisis -**
calling emergency services,
providing emotional
support during hospital
visits, dealing with the
trauma after the event.
- Looking after siblings -**
feeding, bathing,
dressing, homework,
emotional support.
- Completing daily
nursing tasks -**
clearing peg/breathing
tubes, personal care,
feeding and bathing.

To find out more,
scan the QR code



If you believe that your child is a young carer then please speak to our admin team and they will advise you as to how we can help you in school.

Or you can contact Cornwall Young Carers directly on their freephone number 01736 756655, or by emailing kernowyoungcarers@barnardos.org.uk.

Cornwall Young Carers complete great work with the young carers in our county by aiming to support them to self-manage caring responsibilities, providing information, advice and guidance over the phone and working with schools.

They also provide direct 1-1 work with Young Carers and Young Adult Carers as well as offering activities on a regular basis and during the school holidays.



**ChatHealth
Parent Line 0-5**



07312 263 423



**ChatHealth
Parent Line 5-19**



07312 263 499

**ChatHealth Young
People 11-19**



07312 263 096



ChatHealth
Cornwall and the Isles of Scilly

www.cornwall.gov.uk/chathealth

Get
confidential
health and
wellbeing advice
and support



Supporting Parents And Children Emotionally



SPACE is a free programme for any Kernow Learning parent or carer who wants to better understand and support their children's emotions, as well as their own.

FREE!

- ★ Gain an understanding of the impact of life experiences on yourself as a parent & on your children.
- ★ Help to manage your child's behaviour and develop strategies for building resilience in yourself & your children.
- ★ Take away strategies to implement at home and use in everyday life
- ★ Focusing on building the wellbeing of your whole family

Our 5 week programme is available on the following dates, online or at locations across Cornwall.

Trenance Academy, Newquay
Session Dates: 13th Nov, 20th Nov, 27th Nov, 4th Dec, 11th Dec.
Session Times: 1.15pm- 3.15pm

St Francis C of E Academy, Falmouth
Session Dates: 11th Nov, 18th Nov, 25th Nov, 2nd Dec, 9th Dec, 16th Dec
Session Times: 1.00pm- 3.00pm

King Charles C of E Primary School, Falmouth
Session Dates: 11th Nov, 18th Nov, 25th Nov, 2nd Dec, 9th Dec.
Session Times: 3.30pm- 5.30pm

Foxhole Learning Academy, St Austell **ONLINE COURSE DAY TIME**
Sessions Dates: 7th Jan, 14th Jan, 21st Jan, 28th Jan, 4th Feb
Session Times: 10am-11am

Foxhole Learning Academy, St Austell **ONLINE COURSE EVENING**
Session Dates: 27th Feb, 6th Mar, 13th Mar, 20th Mar, 27th Mar
Session Times: 7pm- 8pm

Sky Primary, St Austell **ONLINE COURSE DAY TIME**
Session Dates: 16th June, 23rd June, 30th June, 7th July, 14th July.
Session Times: 1pm-3pm

Scan the QR to
book your place



HEADSTART
KERNOW

 [Book here](#)

**BUILDING
EXCELLENT
Schools Together**

Kernow Learning 

BeBrave

Believe

BeBrilliant

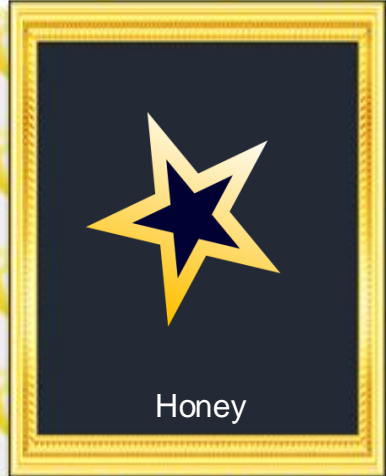
Who shone even brighter!



Maja Glowacka



Ruan Pauling



Honey

Our wonderful winners and their choice of the book of choice...





MENTAL HEALTH SUPPORT TEAM - MHST



Parents and Carers - please join us at our 1hr online Resilience Workshop

Monday 20th January - 9.30am & 4pm
Tuesday 21st January - 11am & 2pm
Wednesday 22nd January - 11.30am & 4pm
Thursday 23rd January - 9.30am & 1.30pm



This workshop aims to talk about the meaning of resilience, explore building resilience and look at how and when a young person should ask for help.

To book a place please complete the online form [HERE](https://forms.office.com/e/TE2UmBZrHK) 
<https://forms.office.com/e/TE2UmBZrHK> or scan the QR code

This workshop is open to parents/carers of primary aged children enrolled in Reception to Year 6 in any school in Cornwall



MENTAL HEALTH SUPPORT TEAM - MHST

 Cornwall Partnership
NHS Foundation Trust



Parents and Carers - please join us at our 1hr online Behaviour Workshop

Monday 27th January - 9.30am & 2pm
Tuesday 28th January - 11.30 am & 4pm
Wednesday 29th January - 9.30am & 1.30pm
Thursday 30th January - 11.00am & 4pm


This workshop provides parents with practical strategies to foster positive behaviour and communication at home.

To book a place please complete the online form [HERE](https://forms.office.com/e/1PwGDXSQ40)
<https://forms.office.com/e/1PwGDXSQ40> or scan the QR code 

This workshop is open to parents/carers of primary aged children enrolled in Reception to Year 6 in any school in Cornwall

MENTAL HEALTH SUPPORT TEAM - MHST

 Cornwall Partnership
NHS Foundation Trust



Parents and Carers - please join us at our 1hr online Sleep Workshop

Monday 3rd February - 11am & 4pm
Tuesday 4th February - 9.30am & 2pm
Wednesday 5th February - 9.30am & 1.30pm
Thursday 6th February - 11am & 1.30pm


This workshop aims to provide psychoeducation on sleep hygiene and sleep routines. Also includes practical strategies for helping children

To book a place please complete the online form [HERE](https://forms.office.com/e/7ac7qHLPhc)
<https://forms.office.com/e/7ac7qHLPhc> or scan the QR code 

This workshop is open to parents/carers of primary aged children enrolled in Reception to Year 6 in any school in Cornwall

Extra notifications 



Nursery



Can we please remind all our Nursery families to be ready at our entrance for your child's start time. When staff have to come out and let people in, it leaves the Nursery understaffed.

Thank you for your understanding.

Start times are **8.30am** or **9.00am** and **12pm** for afternoon sessions.





MONDAY	TUESDAY	WEDNESDAY	THURSDAY	FRIDAY
<p>Macaroni cheese (V) Carrots and peas Tomato and Basil Pasta(v)</p> <p>Fruity yoghurt dessert</p> <p>Allergens: 2,4,7, </p>	<p>Sausage roll with herbed potatoes and broccoli/peas Vegetarian sausage roll (v)</p> <p>Blueberry Muffin</p> <p>Allergens: 2,4,7, </p>	<p>Roast turkey with seasonal vegetables and roast potatoes Quorn Veggie Meatloaf (v)</p> <p>Crumble and custard</p> <p>Allergens: 2,4,7, </p>	<p>Sweet and sour chicken, rice with green beans/carrots Sweet and sour veg (v)</p> <p>Toffee yoghurt</p> <p>Allergens: 2,4,7,14, </p>	<p>Sausage, Chips and sweetcorn Vegetable Fingers (v)</p> <p>Various puddings</p> <p>Allergens: 2,7, </p>
<p>Chicken in cheese sauce pasta bake peas carrots Tomato and Basil Pasta(v)</p> <p>Fruity yoghurt desserts</p> <p>Allergens: 2,4,7, </p>	<p>Chicken Curry with Rice, broccoli, peas and naan bread Vegetable Curry (v)</p> <p>Iced bun</p> <p>Allergens: 2,3,4,5,7, </p>	<p>Roast Beef with seasonal vegetables and roast potatoes Quorn Veggie Meatloaf(v)</p> <p>Banana and custard</p> <p>Allergens: 2,4,7, </p>	<p>Margarita Pizza with Wedges, green beans and sweetcorn Vegan Margarita Pizza (V)</p> <p>Lemon sponge</p> <p>Allergens: 2,4,7, </p>	<p>Fishfingers, Chips and peas Vegetable Sausage (v)</p> <p>Various puddings</p> <p>Allergens: 2,5,7, </p>
<p>Tuna in a tomato herb pasta bake peas/carrots Tomato and Basil Pasta(v)</p> <p>Fruity yoghurt dessert</p> <p>Allergens: 2,4,5,7, </p>	<p>Cottage pie with carrots and sweetcorn Vegetable cottage pie (V)</p> <p>Chocolate Muffin</p> <p>Allergens: 2,4,7, </p>	<p>Roast chicken with seasonal vegetables and roast potatoes Quorn Veggie Meatloaf (v)</p> <p>Fruit salad with custard</p> <p>Allergens: 2,4,7, </p>	<p>Meatballs in a tomato sauce steamed rice and green beans garlic bread Veggie balls (v)</p> <p>Chocolate chip cookie</p> <p>Allergens: 2,4,7,13, </p>	<p>Chicken Dippers, Chips and peas Veggie Chicken (v)</p> <p>Various puddings</p> <p>Allergens: 2,7, </p>

ALLERGENS

1 = CELERY, 2 = CEREAL CONTAINING GLUTEN, 3 = CRUSTACEANS, 4 = EGGS, 5 = FISH, 6 = LUPIN SEEDS AND FLOUR
7 = DAIRY, 8 = MOLLUSCS, 9 = MUSTARD, 10 = NUTS, 11 = PEANUTS, 12 = SESAME SEEDS, 13 = SOYA, 14 = SULPHUR DIOXIDE

January 2025							February 2025							March 2025							April 2025						
Mon	Tue	Wed	Thu	Fri	Sat	Sun	Mon	Tue	Wed	Thu	Fri	Sat	Sun	Mon	Tue	Wed	Thu	Fri	Sat	Sun	Mon	Tue	Wed	Thu	Fri	Sat	Sun
		1	2	3	4	5						1	2	3	4	5	6	7	8	9		1	2	3	4	5	6
6	7	8	9	10	11	12	3	4	5	6	7	8	9	10	11	12	13	14	15	16	7	8	9	10	11	12	13
13	14	15	16	17	18	19	10	11	12	13	14	15	16	17	18	19	20	21	22	23	14	15	16	17	18	19	20
20	21	22	23	24	25	26	17	18	19	20	21	22	23	24	25	26	27	28	29	30	21	22	23	24	25	26	27
27	28	29	30	31			24	25	26	27	28			31							28	29	30				

Jacket potatoes with various fillings, salad bar, fruit and yoghurt available every day



Extra notifications



School Menus

School Menus

SCHOOL MENU – WEEK COMMENCING

Monday 20th January

Monday	Tuesday	Wednesday	Thursday	Friday
<p>Macaroni cheese (V) Carrots and peas Tomato and Basil Pasta(v) Fruity yoghurt dessert Allergens: 2,4,7,</p>  	<p>Sausage roll with herbed potatoes and broccoli/peas Vegetarian sausage roll (v) Blueberry Muffin Allergens: 2,4,7,</p>  	<p>Roast turkey with seasonal vegetables and roast potatoes Quorn Veggie Meatloaf (v) Crumble and custard Allergens: 2,4,7,</p>  	<p>Sweet and sour chicken, rice with green beans/carrots Sweet and sour veg (v) Toffee yoghurt Allergens: 2,4,7,14,</p>  	<p>Sausage, Chips and sweetcorn Vegetable Fingers (v) Various puddings Allergens: 2,7,</p>  

Please ensure you are pre booking your dinners via the MyEd/PlusPay app.



Extra notifications



IMPORTANT
Polite reminder – There are no staff on duty in the mornings until 8:30am. Children arriving before that time are very welcome to attend our free Breakfast Club but should not be on the grounds otherwise for their own safety.



Beacon Academy 

School Terms and Holidays 2024/25

Beacon Academy

<p>September 2024</p> <table border="1"> <tr><td>Mon</td><td>2</td><td>9</td><td>16</td><td>23</td><td>30</td></tr> <tr><td>Tue</td><td>3</td><td>10</td><td>17</td><td>24</td><td></td></tr> <tr><td>Wed</td><td>4</td><td>11</td><td>18</td><td>25</td><td></td></tr> <tr><td>Thu</td><td>5</td><td>12</td><td>19</td><td>26</td><td></td></tr> <tr><td>Fri</td><td>6</td><td>13</td><td>20</td><td>27</td><td></td></tr> <tr><td>Sat</td><td>7</td><td>14</td><td>21</td><td>28</td><td></td></tr> <tr><td>Sun</td><td>1</td><td>8</td><td>15</td><td>22</td><td>29</td></tr> </table>	Mon	2	9	16	23	30	Tue	3	10	17	24		Wed	4	11	18	25		Thu	5	12	19	26		Fri	6	13	20	27		Sat	7	14	21	28		Sun	1	8	15	22	29	<p>October 2024</p> <table border="1"> <tr><td>Mon</td><td>7</td><td>14</td><td>21</td><td>28</td><td></td></tr> <tr><td>Tue</td><td>1</td><td>8</td><td>15</td><td>22</td><td>29</td></tr> <tr><td>Wed</td><td>2</td><td>9</td><td>16</td><td>23</td><td>30</td></tr> <tr><td>Thu</td><td>3</td><td>10</td><td>17</td><td>24</td><td>31</td></tr> <tr><td>Fri</td><td>4</td><td>11</td><td>18</td><td>25</td><td></td></tr> <tr><td>Sat</td><td>5</td><td>12</td><td>19</td><td>26</td><td></td></tr> <tr><td>Sun</td><td>6</td><td>13</td><td>20</td><td>27</td><td></td></tr> </table>	Mon	7	14	21	28		Tue	1	8	15	22	29	Wed	2	9	16	23	30	Thu	3	10	17	24	31	Fri	4	11	18	25		Sat	5	12	19	26		Sun	6	13	20	27		<p>November 2024</p> <table border="1"> <tr><td>Mon</td><td>4</td><td>11</td><td>18</td><td>25</td><td></td></tr> <tr><td>Tue</td><td>5</td><td>12</td><td>19</td><td>26</td><td></td></tr> <tr><td>Wed</td><td>6</td><td>13</td><td>20</td><td>27</td><td></td></tr> <tr><td>Thu</td><td>7</td><td>14</td><td>21</td><td>28</td><td></td></tr> <tr><td>Fri</td><td>1</td><td>8</td><td>15</td><td>22</td><td>29</td></tr> <tr><td>Sat</td><td>2</td><td>9</td><td>16</td><td>23</td><td>30</td></tr> <tr><td>Sun</td><td>3</td><td>10</td><td>17</td><td>24</td><td></td></tr> </table>	Mon	4	11	18	25		Tue	5	12	19	26		Wed	6	13	20	27		Thu	7	14	21	28		Fri	1	8	15	22	29	Sat	2	9	16	23	30	Sun	3	10	17	24	
Mon	2	9	16	23	30																																																																																																																											
Tue	3	10	17	24																																																																																																																												
Wed	4	11	18	25																																																																																																																												
Thu	5	12	19	26																																																																																																																												
Fri	6	13	20	27																																																																																																																												
Sat	7	14	21	28																																																																																																																												
Sun	1	8	15	22	29																																																																																																																											
Mon	7	14	21	28																																																																																																																												
Tue	1	8	15	22	29																																																																																																																											
Wed	2	9	16	23	30																																																																																																																											
Thu	3	10	17	24	31																																																																																																																											
Fri	4	11	18	25																																																																																																																												
Sat	5	12	19	26																																																																																																																												
Sun	6	13	20	27																																																																																																																												
Mon	4	11	18	25																																																																																																																												
Tue	5	12	19	26																																																																																																																												
Wed	6	13	20	27																																																																																																																												
Thu	7	14	21	28																																																																																																																												
Fri	1	8	15	22	29																																																																																																																											
Sat	2	9	16	23	30																																																																																																																											
Sun	3	10	17	24																																																																																																																												
<p>December 2024</p> <table border="1"> <tr><td>Mon</td><td>2</td><td>9</td><td>16</td><td>23</td><td>30</td></tr> <tr><td>Tue</td><td>3</td><td>10</td><td>17</td><td>24</td><td>31</td></tr> <tr><td>Wed</td><td>4</td><td>11</td><td>18</td><td>25</td><td></td></tr> <tr><td>Thu</td><td>5</td><td>12</td><td>19</td><td>26</td><td></td></tr> <tr><td>Fri</td><td>6</td><td>13</td><td>20</td><td>27</td><td></td></tr> <tr><td>Sat</td><td>7</td><td>14</td><td>21</td><td>28</td><td></td></tr> <tr><td>Sun</td><td>1</td><td>8</td><td>15</td><td>22</td><td>29</td></tr> </table>	Mon	2	9	16	23	30	Tue	3	10	17	24	31	Wed	4	11	18	25		Thu	5	12	19	26		Fri	6	13	20	27		Sat	7	14	21	28		Sun	1	8	15	22	29	<p>January 2025</p> <table border="1"> <tr><td>Mon</td><td>6</td><td>13</td><td>20</td><td>27</td><td></td></tr> <tr><td>Tue</td><td>7</td><td>14</td><td>21</td><td>28</td><td></td></tr> <tr><td>Wed</td><td>1</td><td>8</td><td>15</td><td>22</td><td>29</td></tr> <tr><td>Thu</td><td>2</td><td>9</td><td>16</td><td>23</td><td>30</td></tr> <tr><td>Fri</td><td>3</td><td>10</td><td>17</td><td>24</td><td>31</td></tr> <tr><td>Sat</td><td>4</td><td>11</td><td>18</td><td>25</td><td></td></tr> <tr><td>Sun</td><td>5</td><td>12</td><td>19</td><td>26</td><td></td></tr> </table>	Mon	6	13	20	27		Tue	7	14	21	28		Wed	1	8	15	22	29	Thu	2	9	16	23	30	Fri	3	10	17	24	31	Sat	4	11	18	25		Sun	5	12	19	26		<p>February 2025</p> <table border="1"> <tr><td>Mon</td><td>3</td><td>10</td><td>17</td><td>24</td><td></td></tr> <tr><td>Tue</td><td>4</td><td>11</td><td>18</td><td>25</td><td></td></tr> <tr><td>Wed</td><td>5</td><td>12</td><td>19</td><td>26</td><td></td></tr> <tr><td>Thu</td><td>6</td><td>13</td><td>20</td><td>27</td><td></td></tr> <tr><td>Fri</td><td>7</td><td>14</td><td>21</td><td>28</td><td></td></tr> <tr><td>Sat</td><td>1</td><td>8</td><td>15</td><td>22</td><td>29</td></tr> <tr><td>Sun</td><td>2</td><td>9</td><td>16</td><td>23</td><td>30</td></tr> </table>	Mon	3	10	17	24		Tue	4	11	18	25		Wed	5	12	19	26		Thu	6	13	20	27		Fri	7	14	21	28		Sat	1	8	15	22	29	Sun	2	9	16	23	30
Mon	2	9	16	23	30																																																																																																																											
Tue	3	10	17	24	31																																																																																																																											
Wed	4	11	18	25																																																																																																																												
Thu	5	12	19	26																																																																																																																												
Fri	6	13	20	27																																																																																																																												
Sat	7	14	21	28																																																																																																																												
Sun	1	8	15	22	29																																																																																																																											
Mon	6	13	20	27																																																																																																																												
Tue	7	14	21	28																																																																																																																												
Wed	1	8	15	22	29																																																																																																																											
Thu	2	9	16	23	30																																																																																																																											
Fri	3	10	17	24	31																																																																																																																											
Sat	4	11	18	25																																																																																																																												
Sun	5	12	19	26																																																																																																																												
Mon	3	10	17	24																																																																																																																												
Tue	4	11	18	25																																																																																																																												
Wed	5	12	19	26																																																																																																																												
Thu	6	13	20	27																																																																																																																												
Fri	7	14	21	28																																																																																																																												
Sat	1	8	15	22	29																																																																																																																											
Sun	2	9	16	23	30																																																																																																																											
<p>March 2025</p> <table border="1"> <tr><td>Mon</td><td>3</td><td>10</td><td>17</td><td>24</td><td>31</td></tr> <tr><td>Tue</td><td>4</td><td>11</td><td>18</td><td>25</td><td></td></tr> <tr><td>Wed</td><td>5</td><td>12</td><td>19</td><td>26</td><td></td></tr> <tr><td>Thu</td><td>6</td><td>13</td><td>20</td><td>27</td><td></td></tr> <tr><td>Fri</td><td>7</td><td>14</td><td>21</td><td>28</td><td></td></tr> <tr><td>Sat</td><td>1</td><td>8</td><td>15</td><td>22</td><td>29</td></tr> <tr><td>Sun</td><td>2</td><td>9</td><td>16</td><td>23</td><td>30</td></tr> </table>	Mon	3	10	17	24	31	Tue	4	11	18	25		Wed	5	12	19	26		Thu	6	13	20	27		Fri	7	14	21	28		Sat	1	8	15	22	29	Sun	2	9	16	23	30	<p>April 2025</p> <table border="1"> <tr><td>Mon</td><td>7</td><td>14</td><td>21</td><td>28</td><td></td></tr> <tr><td>Tue</td><td>1</td><td>8</td><td>15</td><td>22</td><td>29</td></tr> <tr><td>Wed</td><td>2</td><td>9</td><td>16</td><td>23</td><td>30</td></tr> <tr><td>Thu</td><td>3</td><td>10</td><td>17</td><td>24</td><td>31</td></tr> <tr><td>Fri</td><td>4</td><td>11</td><td>18</td><td>25</td><td></td></tr> <tr><td>Sat</td><td>5</td><td>12</td><td>19</td><td>26</td><td></td></tr> <tr><td>Sun</td><td>6</td><td>13</td><td>20</td><td>27</td><td></td></tr> </table>	Mon	7	14	21	28		Tue	1	8	15	22	29	Wed	2	9	16	23	30	Thu	3	10	17	24	31	Fri	4	11	18	25		Sat	5	12	19	26		Sun	6	13	20	27		<p>May 2025</p> <table border="1"> <tr><td>Mon</td><td>5</td><td>12</td><td>19</td><td>26</td><td></td></tr> <tr><td>Tue</td><td>6</td><td>13</td><td>20</td><td>27</td><td></td></tr> <tr><td>Wed</td><td>7</td><td>14</td><td>21</td><td>28</td><td></td></tr> <tr><td>Thu</td><td>1</td><td>8</td><td>15</td><td>22</td><td>29</td></tr> <tr><td>Fri</td><td>2</td><td>9</td><td>16</td><td>23</td><td>30</td></tr> <tr><td>Sat</td><td>3</td><td>10</td><td>17</td><td>24</td><td>31</td></tr> <tr><td>Sun</td><td>4</td><td>11</td><td>18</td><td>25</td><td></td></tr> </table>	Mon	5	12	19	26		Tue	6	13	20	27		Wed	7	14	21	28		Thu	1	8	15	22	29	Fri	2	9	16	23	30	Sat	3	10	17	24	31	Sun	4	11	18	25	
Mon	3	10	17	24	31																																																																																																																											
Tue	4	11	18	25																																																																																																																												
Wed	5	12	19	26																																																																																																																												
Thu	6	13	20	27																																																																																																																												
Fri	7	14	21	28																																																																																																																												
Sat	1	8	15	22	29																																																																																																																											
Sun	2	9	16	23	30																																																																																																																											
Mon	7	14	21	28																																																																																																																												
Tue	1	8	15	22	29																																																																																																																											
Wed	2	9	16	23	30																																																																																																																											
Thu	3	10	17	24	31																																																																																																																											
Fri	4	11	18	25																																																																																																																												
Sat	5	12	19	26																																																																																																																												
Sun	6	13	20	27																																																																																																																												
Mon	5	12	19	26																																																																																																																												
Tue	6	13	20	27																																																																																																																												
Wed	7	14	21	28																																																																																																																												
Thu	1	8	15	22	29																																																																																																																											
Fri	2	9	16	23	30																																																																																																																											
Sat	3	10	17	24	31																																																																																																																											
Sun	4	11	18	25																																																																																																																												
<p>June 2025</p> <table border="1"> <tr><td>Mon</td><td>2</td><td>9</td><td>16</td><td>23</td><td>30</td></tr> <tr><td>Tue</td><td>3</td><td>10</td><td>17</td><td>24</td><td></td></tr> <tr><td>Wed</td><td>4</td><td>11</td><td>18</td><td>25</td><td></td></tr> <tr><td>Thu</td><td>5</td><td>12</td><td>19</td><td>26</td><td></td></tr> <tr><td>Fri</td><td>6</td><td>13</td><td>20</td><td>27</td><td></td></tr> <tr><td>Sat</td><td>7</td><td>14</td><td>21</td><td>28</td><td></td></tr> <tr><td>Sun</td><td>1</td><td>8</td><td>15</td><td>22</td><td>29</td></tr> </table>	Mon	2	9	16	23	30	Tue	3	10	17	24		Wed	4	11	18	25		Thu	5	12	19	26		Fri	6	13	20	27		Sat	7	14	21	28		Sun	1	8	15	22	29	<p>July 2025</p> <table border="1"> <tr><td>Mon</td><td>7</td><td>14</td><td>21</td><td>28</td><td></td></tr> <tr><td>Tue</td><td>1</td><td>8</td><td>15</td><td>22</td><td>29</td></tr> <tr><td>Wed</td><td>2</td><td>9</td><td>16</td><td>23</td><td>30</td></tr> <tr><td>Thu</td><td>3</td><td>10</td><td>17</td><td>24</td><td>31</td></tr> <tr><td>Fri</td><td>4</td><td>11</td><td>18</td><td>25</td><td></td></tr> <tr><td>Sat</td><td>5</td><td>12</td><td>19</td><td>26</td><td></td></tr> <tr><td>Sun</td><td>6</td><td>13</td><td>20</td><td>27</td><td></td></tr> </table>	Mon	7	14	21	28		Tue	1	8	15	22	29	Wed	2	9	16	23	30	Thu	3	10	17	24	31	Fri	4	11	18	25		Sat	5	12	19	26		Sun	6	13	20	27		<p>August 2025</p> <table border="1"> <tr><td>Mon</td><td>4</td><td>11</td><td>18</td><td>25</td><td></td></tr> <tr><td>Tue</td><td>5</td><td>12</td><td>19</td><td>26</td><td></td></tr> <tr><td>Wed</td><td>6</td><td>13</td><td>20</td><td>27</td><td></td></tr> <tr><td>Thu</td><td>7</td><td>14</td><td>21</td><td>28</td><td></td></tr> <tr><td>Fri</td><td>1</td><td>8</td><td>15</td><td>22</td><td>29</td></tr> <tr><td>Sat</td><td>2</td><td>9</td><td>16</td><td>23</td><td>30</td></tr> <tr><td>Sun</td><td>3</td><td>10</td><td>17</td><td>24</td><td>31</td></tr> </table>	Mon	4	11	18	25		Tue	5	12	19	26		Wed	6	13	20	27		Thu	7	14	21	28		Fri	1	8	15	22	29	Sat	2	9	16	23	30	Sun	3	10	17	24	31
Mon	2	9	16	23	30																																																																																																																											
Tue	3	10	17	24																																																																																																																												
Wed	4	11	18	25																																																																																																																												
Thu	5	12	19	26																																																																																																																												
Fri	6	13	20	27																																																																																																																												
Sat	7	14	21	28																																																																																																																												
Sun	1	8	15	22	29																																																																																																																											
Mon	7	14	21	28																																																																																																																												
Tue	1	8	15	22	29																																																																																																																											
Wed	2	9	16	23	30																																																																																																																											
Thu	3	10	17	24	31																																																																																																																											
Fri	4	11	18	25																																																																																																																												
Sat	5	12	19	26																																																																																																																												
Sun	6	13	20	27																																																																																																																												
Mon	4	11	18	25																																																																																																																												
Tue	5	12	19	26																																																																																																																												
Wed	6	13	20	27																																																																																																																												
Thu	7	14	21	28																																																																																																																												
Fri	1	8	15	22	29																																																																																																																											
Sat	2	9	16	23	30																																																																																																																											
Sun	3	10	17	24	31																																																																																																																											

<p>Key:</p> <ul style="list-style-type: none"> School Holiday Bank Holiday Term Time Inset Day 	<p>Term dates summary:</p> <p>Autumn Term 1: 3rd September - 25th October 2024</p> <p>Autumn Term 2: 4th November - 20th December 2024</p> <p>Spring Term 1: 6th January - 14th February 2025</p> <p>Spring Term 2: 24th February - 4th April 2025</p> <p>Summer Term 1: 22nd April - 23rd May 2025</p> <p>Summer Term 2: 2nd June - 23rd July 2025</p> <p style="text-align: right;">TOTAL: 195</p>
---	--

Bank and Public Holidays 2024/25			
Christmas Day	25th December 2024	Easter Monday	21st April 2025
Boxing Day	26th December 2024	May Bank Holiday	5th May 2025
New Years Day	1st January 2025	Spring Bank Holiday	26th May 2025
Good Friday	18th April 2025	Summer Bank Holiday	25th August 2025