

## Top story this week



Welcome back to a brand-new school year at Beacon. I hope you all had a wonderful summer break. We have missed you and we have certainly missed your children.

It has been such a joy to see our children return to school this week – their smiling faces have truly brought our school back to life. It was so special to see so many of them skip through the gates yesterday, settle into our school routines, and engage in their learning with such enthusiasm.

A special welcome also goes to all our new families and children joining us for the first time this term. We are delighted to have you as part of the Beacon community and look forward to getting to know you better over the coming weeks.

We are so excited to welcome our new reception children to Beacon. Our wonderful team will continue to work closely with you to ensure your child gets the best possible start to their primary school journey. We look forward to watching your children grow, explore, and thrive during their time with us.

Over the summer, our staff team has been busy preparing classrooms and ensuring everything is ready for a brilliant start to the year so that everyone of our children will continue to shine brightly. Our team are so excited to be working with your children this year. As you know, their commitment, care, and passion help make Beacon so special.

This term promises to be a busy and exciting one, full of wonderful opportunities to bring your children's learning alive. Over the next two weeks, we are looking forward to welcoming families into school for our upcoming **Meet the Teacher** meetings. These sessions are a valuable opportunity for you to hear more about the curriculum, classroom routines, year group expectations, and the wonderful opportunities your children will be provided with throughout the academic year. You will have received details of dates and times yesterday, and we encourage all families to attend if they can.






Please keep an eye on our newsletter, website and social media site for key dates, upcoming school events and important information. There is so much to look forward to this term.

As always, we are here to support both you and our children in every way we can. Please don't hesitate to speak to your child's class teacher, or contact the school office, if you have any questions or worries.

Thank you for your continued support, we're excited for all that lies ahead and are looking forward to a happy term where everyone at Beacon shines brightly!

Kaye

## Key Events for next week– KS1 and Shine

	Monday	Tuesday	Wednesday	Thursday	Friday
Reception	Sorting in lots of different ways in Maths.	Who is Jigsaw Jenie? Let's meet our new friend!	Inventing our own stories.	Super scientists-How are we all different?	Drop Everything and Read- bring a book from home.
Year 1	Continuing our new PSHE Unit: Being me in my world	New maths Unit: Place value to 10!	Let write a list poem!	Funky French Thursday!	Drop Everything and Read!
Year 2	Exploring gingerbread men.	Continuing our PSHE unit about being me in my world.	Creating our poems.	Where will we go on our Beacon visit?	Drop everything and read.
Shine					

## Key Events for next week– KS2 and ARB

	Monday	Tuesday	Wednesday	Thursday	Friday
Year 3	PSHE Being me in my World	Talk for Reading Space Detectives!	Short Burst poetry... What will we see?	P.E. Please wear your P.E. kit to school	Drop everything and read
Year 4	Star Reader Quiz	PSHE Being me in my World	PE Day!	Fun French Thursday	Drop everything and read
Year 5	New PSHE unit – Being me in my world	Poetry writing – list and spine poems	Marvellous Maths – Recognising numbers in the 100,000s	Funky French Thursdays and Beacon Visits	Drop Everything and Read
Year 6	New PSHE unit	Poetry writing!	Storyboard writing in reading	PE!	Drop everything and read!
Cosmonauts	PSHE Feelings thermometers	Amazing Art Pirate puppets	Sensational Science Floating and sinking	History Famous pirates	Cooking Treasure maps

# BeBrave★ Believe★ BeBrilliant★

## EYFS 'Highlight of the Week'



### Pre-School

What an absolute joy it has been welcoming our new Pre-school children! We have all enjoyed exploring our new environment. We have settled so well into our new routine. We look forward to welcoming our new families next week.

### Reception

Reception have had the most amazing first two days at school. We have been coming in with huge smiles ready to explore our new environments and getting to know our new friends and teachers. We have been very busy learning our new routines and we even went to assembly! All the adults in Reception are so proud of how well the children are all settling. We can't wait for next week!



# BeBrave



# Believe



# BeBrilliant



## KS1 'Highlight of the Week'



### Year 1

Year 1 have had a brilliant start to this academy year! All the adults across year 1 have been really impressed with the behaviour and readiness for learning over the past two days. It has been amazing to see the enjoyment on the children's faces as they have immersed themselves in the new learning. This week we have been learning all about list poems and we started creating our own about a dragon. We can't wait to see what else the children will achieve this academic year! Amazing work year 1!

### Year 2

It has been such a joy to see all the lovely year 2 children return to school this week. They have shared wonderful memories of their summer and are excited to see their friends. The children are already settling into our new routines with a smile on their faces and blowing us away with their amazing learning behaviour. Well done year 2 on such a super start!





# BeBrave<sup>★</sup> Believe<sup>★</sup> BeBrilliant<sup>★</sup>

## Lower KS2 'Highlight of the Week'



### Year 3

It has been a wonderful welcome back to school for everybody in year 3 and the smiles upon the children's faces has certainly helped! The children have loved seeing their friends again and catching up after the summer break. We have settled back into our routines brilliantly and have had an enthusiastic start to our learning in year 3. Well done Discoverers and Pioneers!



### Year 4

What a superb start to our new term! We have loved welcoming back each and every one of you. This week, our year 4 children have blown us away with their positive attitudes and exemplary behaviour. We cannot wait to see you all next week! You shine so brightly and make us so proud. Well done Constellations and Supernovas.



# BeBrave



# Believe



# BeBrilliant



## Upper KS2 'Highlight of the Week'



### Year 5

Welcome back year 5. It has been amazing to work with everyone over these last two days. Everyone seems to have grown up so much over the summer holidays!

It has been a real pleasure seeing children come into school with big smiles on their faces and approach all lessons with such enthusiasm. Well done year 5 – a great start.



### Year 6

Welcome to year 6! We have had an amazing 2 days back and we are so impressed with how well everyone has settled back in!

We are so excited to see everyone thrive during their time in year 6 and we know that they will all shine brightly!

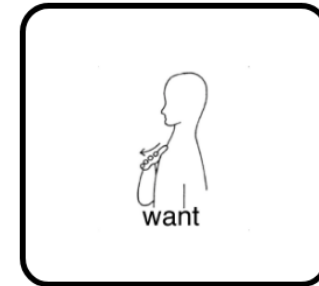
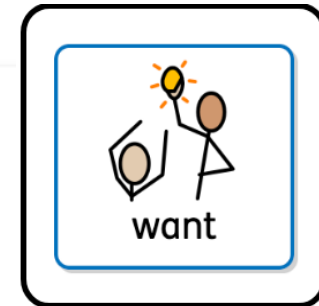




### Cosmonauts

We have had a fantastic start to the new year this week and it has been a joy to see all the children back and ready to learn. We would once again like to give a big thank you to the 'Widows Sons' group for their generous donation which we have used to buy some new outdoor equipment. The children have been having lots of fun exploring the mud kitchen and water channeling system.

### Core word of the week





## Attendance Information



Together   
for Families

### Penalty Notices

A guide to Education Welfare Services  
for parents and carers



[www.cornwall.gov.uk/togetherforfamilies](http://www.cornwall.gov.uk/togetherforfamilies)

### What is a Penalty Notice?

A Penalty Notice is a fine that can be issued under section 444A and section 444B of the Education Act 1996. The fine is issued per parent, per child for:

- Leave of absence of 12 school sessions /6 school days or more (within any 100 school session period) during term time, without authorisation from the school, for a holiday for example
- Unauthorised absence of 12 school sessions /6 school days or more (within any 100 school session period) of absence from school, either when a parent fails to provide an explanation, or an explanation is provided but the school consider it insufficient to authorise
- Unauthorised lateness of 12 school sessions /6 school days or more (within any 100 school session period), resulting from arrival at school after the register has closed

**NB A Penalty Notice can be issued for any combination of the above reasons, where the unauthorised absence from school results in 12 sessions /6 school days or more (within any 100 session period)**

Or, when:

- A pupil is observed in a public place during school hours, in the first five school days of a period of exclusion from school, without reasonable justification

### Who can be issued with a Penalty Notice?

Parents and carers of a child can be issued with a Penalty Notice. The definition of a 'parent' as set out in section 576 of the Education Act 1996: By virtue of this section 'parent' includes: all natural parents, whether they are married or not; any person or body who has parental responsibility for a child (as defined by the Children Act 1989) and any person who, although not a natural parent, has care of a child. Having care of a child means a person who lives with and looks after a child, irrespective of what their relationship is with said child.

### How much is a Penalty Notice fine?

A Penalty Notice carries a fine of £60.00 if paid within 21 days of issue, doubling to £120.00 if paid after 21 but within 28 days.

## Attendance Information

### Penalty Notices are issued per parent, per child.

Therefore, for example, if there are two parents and two children, the fines will total £240.00 if paid within 21 days and £480.00 if paid after 21 days but within 28 days.

### Can a Penalty Notice be paid in instalments?

**No.** Penalty Notices must be paid in full, within the designated dates. However, if a parent has more than one child and is therefore issued with more than one fine, they can pay the fines separately if they wish.

### Who is responsible for issuing Penalty Notices?

It is a Headteacher's decision whether or not to authorise an absence and, if their decision is not to authorise, they have the right to request a Penalty Notice in line with their attendance policy process. Cornwall Council's role is to check that the evidence submitted is compliant with Cornwall Council's Code of Conduct for Education Related Penalty Notices and, if so, to issue as appropriate.

### Can a parent appeal a Penalty Notice?

There is no statutory right of appeal once a Penalty Notice has been issued. If you believe that the Penalty Notice should not have been issued, you should make contact with the school or academy that your child attends at your very earliest convenience after receiving the Penalty Notice. If you wish to discuss the Penalty Notice procedure, you can contact Cornwall Council's Education Welfare Service on **01872 323400**, or email [educationwelfare@cornwall.gov.uk](mailto:educationwelfare@cornwall.gov.uk)

### How is a Penalty Notice paid?

Penalty Notices can be paid by card by calling the office on 01872 323400. Alternatively, payment can be made by cash or cheque at any Cornwall Council Information Service. If the 21st/28th day for payment falls on a weekend or bank holiday, payment will be accepted at the same rate on the following working day.

### What happens if a Penalty Notice is not paid?

If a Penalty Notice is not paid within the 28 days of issue (as per the dates listed on the Penalty Notice), Cornwall Council will progress the matter to the Magistrates' Court, for the offence of failing to ensure regular attendance, NOT for failure to pay the fine.

If found guilty:

- under section 444(1), it can result in the parent being fined up to £1000
- under section 444(1A), it can result in the parent being fined up to £2,500 and/or receiving a custodial sentence of up to 3 months

**Cornwall Council may also apply for costs incurred in taking the matter to court.**

### Contact us

Education Welfare Service

[educationwelfare@cornwall.gov.uk](mailto:educationwelfare@cornwall.gov.uk)

**01872 323 400**

[www.supportincornwall.org.uk/families](http://www.supportincornwall.org.uk/families)

[www.facebook.com/TFFCornwall](https://www.facebook.com/TFFCornwall)



@tffcornwall

**If you would like this information in another format or language please contact:**

Cornwall Council, County Hall,  
Treyew Road, Truro, TR1 3AY

e: [customerservices@cornwall.gov.uk](mailto:customerservices@cornwall.gov.uk)

t: 0300 1234 100



**Cornwall recycles**  
Kernow a wra eylgylghya

# BeBrave Believe BeBrilliant

## Vacancy

**Kernow Learning**

The Old Cricket Pavilion  
Treninnick Hill  
Newquay  
TR7 2JU

[www.kernowlearning.co.uk](http://www.kernowlearning.co.uk)  
Chief Executive Officer: Clare Crowle



### Assistant Caretaker

Beacon Academy, Bodmin

<b>Contract type:</b>	Permanent contract
<b>Available hours:</b>	22.5 hpw, term time (plus 5 inset days)
<b>Salary:</b>	£12.21 per hour
<b>Start date:</b>	As soon as possible
<b>Closing date:</b>	Thursday 18 <sup>th</sup> September 2025
<b>Interview date:</b>	w/c 22 <sup>nd</sup> September 2025
<b>How to apply:</b>	Apply online at <a href="http://www.kernowlearning.co.uk/vacancies">www.kernowlearning.co.uk/vacancies</a>

We are seeking an Assistant Caretaker to start as soon as possible. The role will be mainly based at Beacon Academy in Bodmin but may be required to assist in other schools from time to time. This is a 22.5 hour per week, permanent contract, term time plus 5 inset days.

Duties will include general caretaking duties, locking and unlocking duties, general light maintenance, gardening and cover for the caretaker as required.

The ideal candidate will have knowledge and experience of general building maintenance and awareness of Health and Safety regulations, as well as an enthusiasm and pro-active attitude to their work.

Kernow Learning is a multi-academy trust of 21 primary schools in Cornwall. We believe that our trust is at the precipice of something great; through a mix of collective synchronicity and autonomy, our schools are working together to provide strength so that they can stretch their offer beyond expectations in their drive for excellence. Our trust is not insular; we embrace collaboration, innovation, and development. Our English Hub supports schools across Cornwall to secure children's early reading, whilst our Teaching School Hub, as a partner in OneCornwall, provides services to schools across Cornwall and the Isles of Scilly in relation to areas such as the Early Career Framework and National Professional Qualifications.

Beacon is a primary school and nursery for children aged 3 to 11 years old with an Area Resource Base for pupils from 4 years old. We hope that children will join us from the age of 3, when they can enjoy our fantastic outdoor Nursery, and then thrive on the provision in each year group up to Year 6. It is at the end of Year 6 that we say goodbye to our confident, well-rounded young people, as they move on to secondary school equipped with skills which will take them successfully forward into the next stage of their education and indeed, will take them on into their longer-term futures.

We have three key values at Beacon Academy: Be Brilliant, Be Brave, Believe. These values work in partnership with our Trust Core Shared Values and our Trust Philosophy of 'work hard, be honest & help others'. Our three school key values underpin everything we do. We want every child and every member of our community to hold these values close at all times. These values will, we are sure, enable every child and member of our school community to 'Shine Brightly'.

We are accredited as one of only 16 primary Talk for Writing Training Centres across the UK that are recognised for their high-quality teaching of reading and writing.

As well as offering great schools to work in, wonderful children to work with, and fantastic colleagues to work alongside, our Trust is committed to providing colleagues with other benefits that make your employment with Kernow Learning the best it can be. We offer:

- A competitive salary and membership of Local Government Pension Scheme;
- A real commitment to wellbeing, including access to 24/7 wellbeing services and employee assistance programme;
- Access to discounts with national and local retailers and service providers;
- A range of CPD and training opportunities, both internally and externally, learning from local and national speakers and specialists to support your professional growth;
- The support and skills of our networks of colleagues both within our schools and our Shared Services teams.

If you would like the opportunity to contribute to the success of our trust, then we would love to hear from you. Please call Sue Wickett, Admin Manager at Beacon Academy for an informal discussion about the role on 01208 727773. You can apply for this position online by visiting [www.kernowlearning.co.uk/vacancies](http://www.kernowlearning.co.uk/vacancies). Previous applicants need not apply.

Kernow Learning is committed to safeguarding the welfare of children and follows the Safer Recruitment process. The successful candidate will be expected to share this commitment and will be required to undertake checks including an enhanced disclosure through the DBS process, as well as prohibition, ST28, and Social Media/online presence checks.

We are an equal opportunities employer and welcome applications from all.

Unfortunately, Kernow Learning is not a sponsoring organisation for overseas candidates. This means that the successful candidate will need to possess the right to work in the UK or be able to secure the right to work in the UK independently.

For further information, or for support with the application process, please contact our HR Team on 01637 303106 or email [hr@kernowlearning.co.uk](mailto:hr@kernowlearning.co.uk).

Apply now at [www.kernowlearning.co.uk/vacancies](http://www.kernowlearning.co.uk/vacancies).

Beacon Academy  
38 Robartes Road  
Bodmin  
PL31 1UQ



Kernow Learning Multi-Academy Trust, trading as Kernow Learning, is a company limited by guarantee, registered in England and Wales. [Company Number: 07046460]  
Registered Office: The Old Cricket Pavilion, Treninnick Hill, Newquay, Cornwall, TR7 2JU. An exempt charity.



## Dates for the diary!

Monday 8th September	<ul style="list-style-type: none"><li>• Meet the Teacher Meeting – Year 1</li></ul>
Tuesday 9th September	<ul style="list-style-type: none"><li>• Meet the Teacher Meeting – Year 2</li><li>• Meet the Teacher Meeting - Preschool</li></ul>
Thursday 11th September	<ul style="list-style-type: none"><li>• Meet the Teacher Meeting - Year</li></ul>
Monday 15th September	<ul style="list-style-type: none"><li>• Meet the Teacher Meeting – Year 4</li></ul>
Tuesday 16th September	<ul style="list-style-type: none"><li>• Meet the Teacher Meeting – Year 6</li></ul>
Wednesday 17th September	<ul style="list-style-type: none"><li>• Meet the Teacher Meeting - Reception</li></ul>
Thursday 18th September	<ul style="list-style-type: none"><li>• Meet the Teacher Meeting – Year 5</li></ul>
Monday 27th October – Friday 31st October	<ul style="list-style-type: none"><li>• Autumn Half Term Break</li></ul>
Monday 3rd November	<ul style="list-style-type: none"><li>• INSET Day – School Closed to Pupils</li></ul>
Monday 24th November	<ul style="list-style-type: none"><li>• INSET Day – School Closed to Pupils</li></ul>
Monday 23rd February	<ul style="list-style-type: none"><li>• INSET Day – School Closed to Pupils</li></ul>



# IMPORTANT

For safeguarding purposes children should not be wearing smart watches in school.



# BeBrave Believe BeBrilliant

## Applying for a Reception place for September 2026



Together   
for Families

The  
deadline for  
applications is  
**15 January  
2026**

Do you have a  
child born **between  
1 September 2021  
and 31 August 2022?**

If so, you will need to apply  
for a place in a reception  
class in September 2026 for  
your child by the deadline  
of **15 January 2026**.



**Please note:** you will need to apply even if your child attends a school's nursery or pre-school class. If a school is oversubscribed the fact that a child attends a school's nursery or pre-school, or a local nursery or pre-school, does not automatically guarantee a place at that school. The school's oversubscription criteria will be used to allocate places. Visit our website or contact us for more information.

Visit [www.cornwall.gov.uk/admissions](https://www.cornwall.gov.uk/admissions) for more information and to access the online application system.



scan me



Photos © iStockphoto.com, Adobe Stock  
JACARANDA 06/25

[www.cornwall.gov.uk/admissions](https://www.cornwall.gov.uk/admissions)

# BeBrave Believe BeBrilliant

## Applying for a Secondary place for September 2026



Together   
for Families

### Transfer to secondary school

September 2026

Applying for a place  
in year seven at a  
secondary school



The  
deadline for  
applications is  
**31 October  
2025**

#### Information and guidance

Application form and information: [www.cornwall.gov.uk/admissions](http://www.cornwall.gov.uk/admissions)  
Telephone: 0300 1234 101



[www.cornwall.gov.uk/admissions](http://www.cornwall.gov.uk/admissions)



### Applying for a **secondary school** place for **September 2026**

#### Special Educational Needs

If an Education, Health and Care (EHC) Plan has been issued for your child you do not need to complete an application form. Please contact the Statutory SEN Service for more information: Tel: 01872 324242 Email: [statutorysen@cornwall.gov.uk](mailto:statutorysen@cornwall.gov.uk)

#### 1 Decide on your preferred schools

You are strongly advised to name **three** preferences on the application form. **Naming a second or third preference does not give you any less chance of getting a place at your preferred school.** When making your decision you should...

...think about **how your child will get to school.** Go to [www.cornwall.gov.uk/schooltransport](http://www.cornwall.gov.uk/schooltransport) for more information on whether your child would be entitled to home to school travel assistance.

...look at the **admission arrangements** on our website that will be used to allocate places for each school.

...consider naming your **nearest or designated school** as one of your preferences. You can find your nearest or designated school on our website.

...look at the detailed **admissions information** on our website, also available on request.

#### 2 Submit your application by 31 October 2025

Apply online at [www.cornwall.gov.uk/admissions](http://www.cornwall.gov.uk/admissions)

#### 3 Wait to find out which school you have been allocated

If you applied on time you will be notified of your allocation on **National Offer Day: 2 March 2026. Apply on time!** Late applications will only be dealt with after National Offer Day and there may not be any places left at your preferred schools.

Photo © Adobe stock jn586988 06/25



# BeBrave

# Believe

# BeBrilliant

## Young Carers

**AM I A YOUNG CARER?**

If any of these sound like you, you may be a Young Carer...

- Practical tasks –** cooking, housework, shopping and gardening.
- Physical care –** helping the cared for in/out of bed, around the house, outside the home.
- Emotional support –** listening, talking and showing empathy.
- Personal care –** undressing/dressing, bathing, using the toilet.
- Managing the family budget –** paying bills, seeking benefits, working to contribute financially.
- Supporting with Communication –** Making calls, relaying needs to professionals, helping a sibling communicate.
- Dealing with Medication –** collecting prescriptions, giving medication, attending appointments.
- Supporting family members during crisis –** calling emergency services, providing emotional support during hospital visits, dealing with the trauma after the event.
- Looking after siblings –** feeding, bathing, dressing, homework, emotional support.
- Completing daily nursing tasks –** clearing peg/breathing tubes, personal care, feeding and bathing.

To find out more, scan the QR code

If you believe that your child is a young carer then please speak to our admin team and they will advise you as to how we can help you in school.

Or you can contact Cornwall Young Carers directly on their freephone number 01736 756655, or by emailing [kernowyoungcarers@barnardos.org.uk](mailto:kernowyoungcarers@barnardos.org.uk).

Cornwall Young Carers complete great work with the young carers in our county by aiming to support them to self-manage caring responsibilities, providing information, advice and guidance over the phone and working with schools.

They also provide direct 1-1 work with Young Carers and Young Adult Carers as well as offering activities on a regular basis and during the school holidays.



Extra notifications



Open from 8:00 – 8:30 daily  
(Booking required)

Our free breakfast club operates during term time and is available to all pupils. Starting at 8:00 AM until the start of school we offer the children a selection of healthy breakfast options such as toast, cereals, fruit, water, and milk. The children will then have the opportunity to enjoy reading games puzzles and other to activities.

Sponsored  
by



FREE for all children

**Beacon**  
Shine brightly

## Extra notifications

### End of day pickups

We all experience problems from time to time collecting at the end of school day, the long queue, stuck in a traffic jam etc, so if you find the playground empty when collecting your child at the end of the day, please collect them from wraparound – situated in Spaceship class via the Y2 playground.



### **IMPORTANT**

Please can we remind all parents do not park, during drop off and collection, on the yellow Zigzags outside the school. This is for the safety of your children. Please help us keep our children safe.



### A Polite Request.

If you need to get a message to your child during the school day, please call the main office before **2:30pm** to ensure the message is passed on.



### **IMPORTANT REQUEST**

Can we please ask parents when collecting children from school that you do not park in the bays above the bungalows. We had one resident today that could not park her car near her bungalow and due to being disabled this caused problems for her. Thank you for being respectful to our neighbours.



Kernow Learning

## School Terms and Holidays 2025/26

Beacon Academy

<b>September 2025</b> Mon 1 8 15 22 29 Tue 2 9 16 23 30 Wed 3 10 17 24 Thu 4 11 18 25 Fri 5 12 19 26 Sat 6 13 20 27 Sun 7 14 21 28	<b>October 2025</b> Mon 6 13 20 27 Tue 7 14 21 28 Wed 1 8 15 22 29 Thu 2 9 16 23 30 Fri 3 10 17 24 31 Sat 4 11 18 25 Sun 5 12 19 26	<b>November 2025</b> Mon 3 10 17 24 Tue 4 11 18 25 Wed 5 12 19 26 Thu 6 13 20 27 Fri 7 14 21 28 Sat 1 8 15 22 29 Sun 2 9 16 23 30
<b>December 2025</b> Mon 1 8 15 22 29 Tue 2 9 16 23 30 Wed 3 10 17 24 31 Thu 4 11 18 25 Fri 5 12 19 26 Sat 6 13 20 27 Sun 7 14 21 28	<b>January 2026</b> Mon 5 12 19 26 Tue 6 13 20 27 Wed 7 14 21 28 Thu 1 8 15 22 29 Fri 2 9 16 23 30 Sat 3 10 17 24 31 Sun 4 11 18 25	<b>February 2026</b> Mon 2 9 16 23 Tue 3 10 17 24 Wed 4 11 18 25 Thu 5 12 19 26 Fri 6 13 20 27 Sat 7 14 21 28 Sun 1 8 15 22
<b>March 2026</b> Mon 2 9 16 23 30 Tue 3 10 17 24 31 Wed 4 11 18 25 Thu 5 12 19 26 Fri 6 13 20 27 Sat 7 14 21 28 Sun 1 8 15 22 29	<b>April 2026</b> Mon 6 13 20 27 Tue 7 14 21 28 Wed 1 8 15 22 29 Thu 2 9 16 23 30 Fri 3 10 17 24 Sat 4 11 18 25 Sun 5 12 19 26	<b>May 2026</b> Mon 4 11 18 25 Tue 5 12 19 26 Wed 6 13 20 27 Thu 7 14 21 28 Fri 1 8 15 22 29 Sat 2 9 16 23 30 Sun 3 10 17 24 31
<b>June 2026</b> Mon 1 8 15 22 29 Tue 2 9 16 23 30 Wed 3 10 17 24 Thu 4 11 18 25 Fri 5 12 19 26 Sat 6 13 20 27 Sun 7 14 21 28	<b>July 2026</b> Mon 6 13 20 27 Tue 7 14 21 28 Wed 1 8 15 22 29 Thu 2 9 16 23 30 Fri 3 10 17 24 31 Sat 4 11 18 25 Sun 5 12 19 26	<b>August 2026</b> Mon 3 10 17 24 31 Tue 4 11 18 25 Wed 5 12 19 26 Thu 6 13 20 27 Fri 7 14 21 28 Sat 1 8 15 22 29 Sun 2 9 16 23 30

### Key:

<span style="background-color: #e0f0ff; border: 1px solid black; display: inline-block; width: 15px; height: 10px;"></span>	School Holiday
<span style="background-color: #e0ffe0; border: 1px solid black; display: inline-block; width: 15px; height: 10px;"></span>	Bank Holiday
<span style="background-color: #e0ffe0; border: 1px solid black; display: inline-block; width: 15px; height: 10px;"></span>	INSET Day
<span style="background-color: #ffffff; border: 1px solid black; display: inline-block; width: 15px; height: 10px;"></span>	School open

### Term dates summary:

#### Autumn Term (74 days)

2nd September 2025 - 19th December 2025 (Half term: 27th-31st October 2025)

#### Spring Term (59 days)

5th January 2026 - 2nd April 2026 (Half term: 16th - 20th February 2026)

#### Summer Term (62 days)

20th April 2026 - 22nd July 2026 (Half term: 25th-29th May 2026)

### Bank and Public Holidays 2025/26

Christmas Day	25th December 2025	Easter Monday	6th April 2026
Boxing Day	26th December 2025	May Bank Holiday	4th May 2025
New Years Day	1st January 2026	Spring Bank Holiday	25th May 2026
Good Friday	3rd April 2026	Summer Bank Holiday	31st August 2026



## Extra notifications



### IMPORTANT

Polite reminder – There are no staff on duty in the mornings until 8:30am. Children arriving before that time are very welcome to attend our free Breakfast Club but should not be on the grounds otherwise for their own safety.



Extra notifications 



## Nursery



Can we please remind all our Nursery families to be ready at our entrance for your child's start time. When staff have to come out and let people in, it leaves the Nursery understaffed.

Thank you for your understanding.

Start times are **8.30am** or **9.00am** and **12pm** for afternoon sessions.





**ChatHealth**  
**Parent Line 0-5**



**07312 263 423**

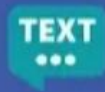


**ChatHealth**  
**Parent Line 5-19**



**07312 263 499**

**ChatHealth Young**  
**People 11-19**



**07312 263 096**



**ChatHealth**  
Cornwall and the Isles of Scilly

[www.cornwall.gov.uk/chathealth](http://www.cornwall.gov.uk/chathealth)

Get  
confidential  
health and  
wellbeing advice  
and support

[cornwall.gov.uk](http://cornwall.gov.uk)

MONDAY	TUESDAY	WEDNESDAY	THURSDAY	FRIDAY
<p>Macaroni cheese (V) with carrots and peas Tomato and Basil pasta(v)</p> <p>Fruity yoghurt dessert</p> <p>Allergens: 2,4,7,  </p>	<p>Beef Stew Veggie Stew (v)</p> <p>Blueberry muffin Allergen: 2,4,7 </p>	<p>Roast gammon with seasonal vegetables and roast potatoes Vegetable Roast (v)</p> <p>peach crumble and custard</p> <p>Allergens:2,4,7  </p>	<p>Chicken curry and rice with carrots and peas Vegetable curry (v)</p> <p>Vanilla ice cream</p> <p>Allergens : 2,4,7  </p>	<p>Fish fingers with chips and sweetcorn Vegetable fingers (v)</p> <p>Various puddings</p> <p>Allergens: 2,5,7,  </p>
<p>Chicken in cheese sauce pasta bake, peas and carrots Tomato and Basil Pasta(v)</p> <p>Fruity yoghurt desserts</p> <p>Allergens: 2,4,7,  </p>	<p>Beef cottage pie Carrots and peas Quorn pie (v)</p> <p>Chocolate chip cookie</p> <p>Allergens: 2,4,7  </p>	<p>Roast Turkey with seasonal vegetables and roast potatoes Vegetable Roast (v)</p> <p>Banana and custard</p> <p>Allergens: 2,4,7,  </p>	<p>Meatballs tomato/herb sauce with steamed rice, green beans and cauliflower meat free balls (v)</p> <p>Chocolate sponge</p> <p>Allergen: 2,4,7  </p>	<p>Cheese and tomato pizza with chips and peas (v)</p> <p>Various puddings</p> <p>Allergens: 2,5,7,  </p>
<p>Tuna in a tomato herb pasta bake peas and carrots Tomato and Basil Pasta(v)</p> <p>Fruity yoghurt dessert</p> <p>Allergens: 2,4,5,7,  </p>	<p>Chicken Pie with herbed potato's, Carrots and peas Vegetable pie (v)</p> <p>Lemon sponge</p> <p>Allergens: 2,4,7  </p>	<p>Roast beef with seasonal vegetables and roast potatoes Vegetable roast (v)</p> <p>Apple crumble and custard</p> <p>Allergens: 2,4,7,  </p>	<p>Sticky BBQ sauce with chicken, steamed Rice and stir fry vegetables Sticky BBQ sauce with Quorn (v)</p> <p>Meringues with fruit</p> <p>Allergens:2,4,7,12,13  </p>	<p>Pork sausage with Chips and peas Veggie sausage (v)</p> <p>Various puddings</p> <p>Allergens: 2,5,7  </p>

## ALLERGENS

1 = CELERY, 2 = CEREAL CONTAINING GLUTEN, 3 = CRUSTACEANS, 4 = EGGS, 5 = FISH, 6 = LUPIN SEEDS AND FLOUR  
7 = DAIRY, 8 = MOLLUSCS, 9 = MUSTARD, 10 = NUTS, 11 = PEANUTS, 12 = SESAME SEEDS, 13 = SOYA, 14 = SULPHUR DIOXIDE

September 2025							October 2025							November 2025							December 2025						
Mon	Tue	Wed	Thu	Fri	Sat	Sun	Mon	Tue	Wed	Thu	Fri	Sat	Sun	Mon	Tue	Wed	Thu	Fri	Sat	Sun	Mon	Tue	Wed	Thu	Fri	Sat	Sun
1	2	3	4	5	6	7			1	2	3	4	5						1	2	1	2	3	4	5	6	7
8	9	10	11	12	13	14	6	7	8	9	10	11	12	3	4	5	6	7	8	9	8	9	10	11	12	13	14
15	16	17	18	19	20	21	13	14	15	16	17	18	19	10	11	12	13	14	15	16	15	16	17	18	19	20	21
22	23	24	25	26	27	28	20	21	22	23	24	25	26	17	18	19	20	21	22	23	22	23	24	25	26	27	28
29	30						27	28	29	30	31			24	25	26	27	28	29	30	29	29	30				

Jacket potatoes with various fillings, salad bar, fruit and yoghurt available every day



Extra notifications 


## School Menus

## School Menus

SCHOOL MENU – WEEK COMMENCING

Monday 8th September

Monday	Tuesday	Wednesday	Thursday	Friday
Chicken in cheese sauce pasta bake, peas and carrots Tomato and Basil Pasta(v) Fruity yoghurt desserts Allergens: 2,4,7,  	Beef cottage pie Carrots and peas Quorn pie (v) Chocolate chip cookie Allergens: 2,4,7 	Roast Turkey with seasonal vegetables and roast potatoes Vegetable Roast (v) Banana and custard Allergens: 2,4,7, 	Meatballs tomato/herb sauce with steamed rice, green beans and cauliflower meat free balls (v) Chocolate sponge Allergen: 2,4,7 	Cheese and tomato pizza with chips and peas (v) Various puddings Allergens: 2,5,7, 

 Please ensure you are pre booking your dinners via the MyEd/PlusPay app.