

## Top story this week



Dear families,

I hope you all managed to soak up some of that glorious Cornish sunshine over the half term break. It's been such a joy seeing the children come bursting back through the gates this week. And a wonderful welcome to the second half of the summer term. It's always a busy one, and this year is absolutely jampacked with special events and memorable moments.

This week, our Year 3 children set off on their big Bristol adventure, and what an adventure it was. The children (and the adults!) were incredible. Over two exciting days they explored HMS Great Britain, climbed Cabot Tower, visited the Hindu Temple, enjoyed a boat trip along the river... and, of course, had an absolute blast at Ninja Warrior.

They made memories they'll be talking about for years. A huge thank you to the staff and parents who gave their time and support to make this trip possible, it truly means the world.

Thank you as well to all our wonderfully creative children and families who entered the Royal Beacon Show. Wow...what a display. The standard this year was phenomenal, and every category showcased the incredible talents of our pupils. Our Year 6 pupil leaders had the very tricky job of judging, which they took incredibly seriously.

The weather may not have played along this week, which meant our Royal Beacon Show had to move indoors. Thank you to every family who came along, waited patiently, admired the entries, and snapped up the delicious edible creations. Your support helps enormously and every penny raised will go towards making Beacon Fest 2027 even bigger and better than last year.

Looking ahead, our KS2 children are in for a treat as they take part in Shakespeare workshops with a visiting theatre company. These sessions will bring their new Talk for Writing units to life and deepen their understanding of his brilliant stories. Year 4 will also be heading out for their sailing lessons, and yes, we've already put in a polite request for the dolphins to join us again. Weather permitting, classes will soon be gearing up for sports days too, so we expect plenty of practising and excitement around the field.

Wishing you all a wonderful weekend, and as always, thank you for your continued support. It makes everything we do possible.

Kaye

## Key Events for After Half Term– Reception and KS1

	Monday	Tuesday	Wednesday	Thursday	Friday
Reception	PE day.	Collaging in art.	Who is the best storyteller?	Homes around the world with Bertie Owl.	Shine Brightly!
Year 1	Learning our new recount text!	New Music Unit!	PE Day!	Maths fun: What is an array?	Shine Brightly!
Year 2	Writing our opening for our dialogue text.	PE day- practicing for sports day.	Learning to count in fractions.	Learning about Islam.	Shine Brightly!

## Key Events for next week– KS2 and ARB

	Monday	Tuesday	Wednesday	Thursday	Friday
Year 3	TfW innovation Bristol	New math unit Money	DT	PE Wear your trainers	Shine Brightly assembly
Year 4	Multiplication Check	Shakespeare Workshop	PE Please remember to wear your kit.	Funky French	YES DAY!
Year 5	<i>Find out what happens next to Maisie Day during T4R!</i>	PE- Please remember to wear your kit	Midweek Maths Challenge! Are you ready?	Funky French	<b>Drop Everything and Read</b>
Year 6	New science unit	Shakespeare Workshop	Starting to write our tales of suspense	PE Bring your PE kit	Drop everything and read
Cosmonauts	PSHE Team building	Amazing Art Making moving elephants	Sensational Science Leaf rubbings Exploring herbs	Outdoor learning Nature hunt	Cooking Edible elephants

# BeBrave Believe BeBrilliant

## EYFS 'Highlight of the Week'



### Nursery

Nursery this week we have been developing our hand and eye co-ordination by threading the pasta to create a beanstalk. We have also been practising our sign of 'more' this week.

### Pre-School

This week in Pre-school we have introduced the story 'The Very Hungry Caterpillar'. We have enjoyed a turn taking game in small groups memorising and matching the same butterflies.

### Reception

This week in Reception we have started to learn our new Talk for Writing story 'Handa's Surprise'. On Wednesday, we all walked to the fruit shop and bought the fruit from the story. We then enjoyed smelling, touching, and tasting the different fruits.

During independent learning we have been making houses for the animals using Lego and Duplo.



# BeBrave



# Believe



# BeBrilliant



## KS1 'Highlight of the Week'



### Year 1

Year 1 have had a brilliant first week back at school, kicking off the 2nd half of the summer term with lots of enthusiasm and excitement for learning. This week, our focus has been on history as we explored the life and achievements of Neil Armstrong, the first person to walk on the Moon. The children learned about who he was, his career as an astronaut, the experiences that helped him achieve his dreams, and how his historic Moon landing changed the future of space travel and our understanding of space. It has been wonderful to see the children's curiosity and excitement for this topic grow throughout the week. We may even have a few future astronauts in our classrooms! Well done, Year 1 - brilliant work!

### Year 2

Year 2 have absolutely blown us away this week with their entries for the Royal Beacon Show, the creativity shown was amazing. Everyone who entered should be really proud of themselves, well done!

It was very exciting to go and visit the show and see all the entries from the other year groups, the children were respectful of the other entries and remembered not to touch them.



# BeBrave

# Believe

# BeBrilliant

## Lower KS2 'Highlight of the Week'



### Year 3

Year 3 had a fantastic time on our Bristol residential this week. We enjoyed visiting a variety of places around the city and learning through lots of exciting experiences. A particular highlight was our visit to Ninja Warrior, which was the perfect way to finish two busy and action-packed days. Well done to all of Year 3 for being brave, respectful, and safe throughout the trip—you represented the school brilliantly!

### Year 4

This week, our Year 4 children have been working incredibly hard on their times tables and have shown great determination and perseverance. Some children have already completed their official Multiplication Tables Check, while others will be taking theirs next week. We are so proud of the effort, commitment, and positive attitudes they have demonstrated throughout their preparation. All the adults that have been working with them have been delighted to see the progress the children have made and are confident that they will continue to do their very best next week!



# BeBrave



# Believe



# BeBrilliant



## Upper KS2 'Highlight of the Week'



### Year 5

What an absolute pleasure it has been to welcome the children back this week! They arrived on Monday looking incredibly eager and full of enthusiasm. During the mornings, we have been busy with our new Shakespearean text, A Midsummer Night's Dream, and throughout the afternoons we have been deepening our understanding of Properties of Materials. In addition to this, we have been continuing to develop our musical projects using the digital workstation, Garage Band. Have a lovely, restful weekend everyone... you deserve it!

### Year 6

It has been lovely welcoming everyone back to school, we have had a great first week back after half term. The children have returned with enthusiasm and have settled straight back into their learning. This week, we have immersed ourselves into our History unit and have been learning about life during WWII. As part of our DT work, the children have been designing and building their own Anderson Shelters. This was a fantastic and engaging project which the children thoroughly enjoyed; it was wonderful to see the creativity, resilience and problem-solving skills shown! We hope you have a lovely weekend!



# BeBrave



# Believe



# BeBrilliant



## Cosmonauts and Shine 'Highlight of the Week'



### ARB

We have had a busy week to start off the 2nd half of the summer term. We have made spinning snakes and animal footprint trails in art, explored the parts of flowers using our senses and magnifying glasses in science and made edible animals in science. Despite the rain we have been getting lots of outdoor learning time and enjoying lots of social time with our friends.

### Shine

We have had a great first week back launching into our new Talk for Writing and Talk for Reading texts.

This week we visited Aldi to do our shopping and made egg and bacon pies in cooking.







# BeBrave

# Believe

# BeBrilliant

## Who has SHONE BRIGHTLY this week?

## Looking after the environment

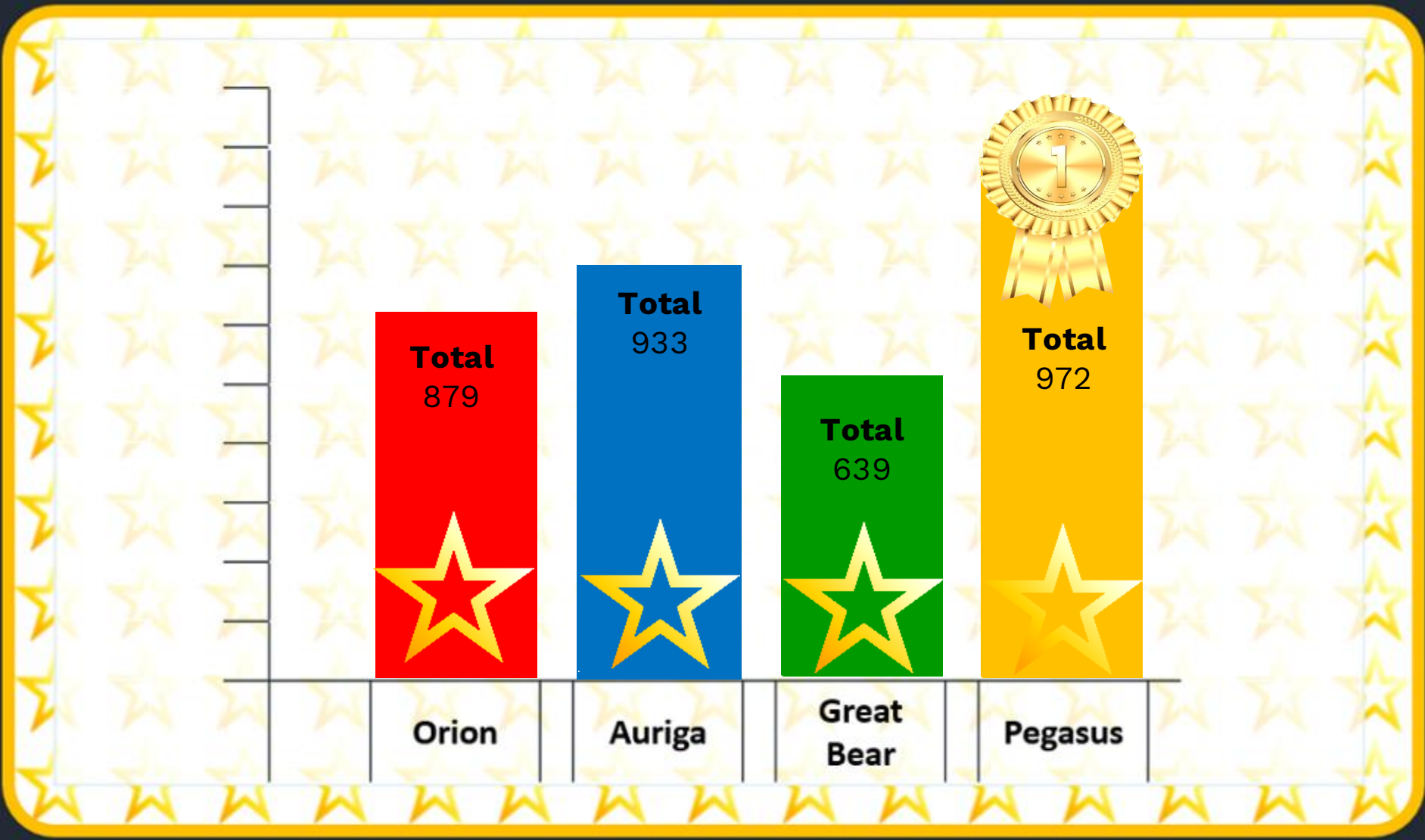
<b>Space Voyagers (YR)</b>		Theo Prickett	<b>Pioneers (Y3)</b>		Pioneers
<b>Space Travellers (YR)</b>		Kobie Burton	<b>Discoverers (Y3)</b>		
<b>Space Adventurers (Y1)</b>		Arya-Rose Moore	<b>Supernovas (Y4)</b>		Isaac Gwilliam-Humphries
<b>Space Explorers (Y1)</b>		Fletcher Angel	<b>Constellations (Y4)</b>		Ruby-Autumn Cummings
<b>Spaceships (Y2)</b>		Bea Sturdy	<b>Comets (Y5)</b>		Lowenna Burnett
<b>Rockets (Y2)</b>		Millie-Rose Gregory	<b>Meteors (Y5)</b>		Kiera Patockova-Robins
<b>Cosmonauts (ARB)</b>		Bonnie Dalley	<b>Aviators (Y6)</b>		Lilly May
<b>Shine</b>			<b>Astronomers (Y6)</b>		Ross Parker
			<b>Astronauts (Y6)</b>		Polly Tourle

BeBrave 

Believe 

BeBrilliant 

House Points! 

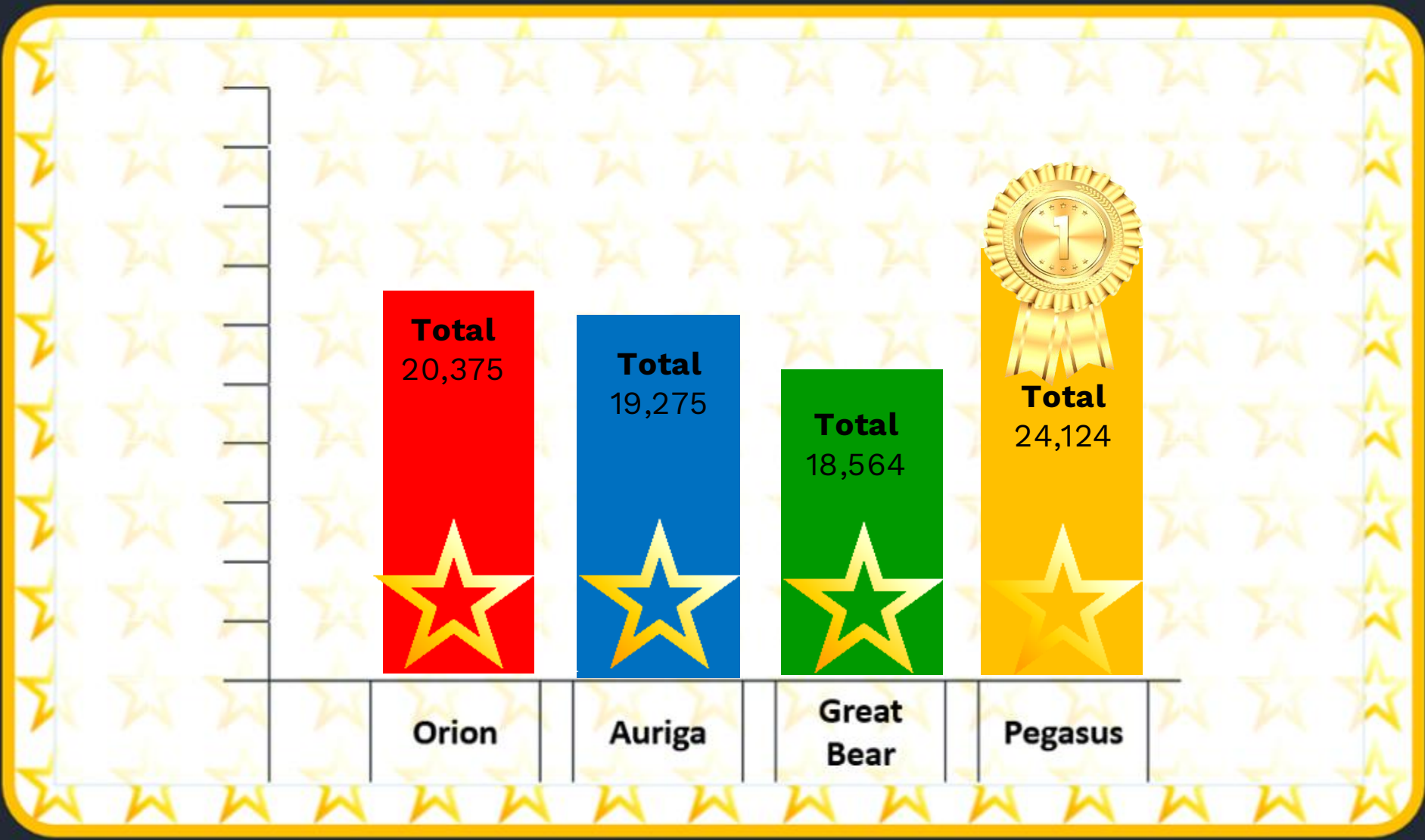


BeBrave 

Believe 

BeBrilliant 

House Points! 



## Extra notifications



**IMPORTANT**  
Polite reminder – There are no staff on duty in the mornings until 8:30am. Children arriving before that time are very welcome to attend our free Breakfast Club but should not be on the grounds otherwise for their own safety.

## Attendance Information



Together   
for Families

### Penalty Notices

A guide to Education Welfare Services  
for parents and carers



[www.cornwall.gov.uk/togetherforfamilies](http://www.cornwall.gov.uk/togetherforfamilies)

### What is a Penalty Notice?

A Penalty Notice is a fine that can be issued under section 444A and section 444B of the Education Act 1996. The fine is issued per parent, per child for:

- Leave of absence of 12 school sessions /6 school days or more (within any 100 school session period) during term time, without authorisation from the school, for a holiday for example
- Unauthorised absence of 12 school sessions /6 school days or more (within any 100 school session period) of absence from school, either when a parent fails to provide an explanation, or an explanation is provided but the school consider it insufficient to authorise
- Unauthorised lateness of 12 school sessions /6 school days or more (within any 100 school session period), resulting from arrival at school after the register has closed

**NB A Penalty Notice can be issued for any combination of the above reasons, where the unauthorised absence from school results in 12 sessions /6 school days or more (within any 100 session period)**

Or, when:

- A pupil is observed in a public place during school hours, in the first five school days of a period of exclusion from school, without reasonable justification

### Who can be issued with a Penalty Notice?

Parents and carers of a child can be issued with a Penalty Notice. The definition of a 'parent' as set out in section 576 of the Education Act 1996: By virtue of this section 'parent' includes: all natural parents, whether they are married or not; any person or body who has parental responsibility for a child (as defined by the Children Act 1989) and any person who, although not a natural parent, has care of a child. Having care of a child means a person who lives with and looks after a child, irrespective of what their relationship is with said child.

### How much is a Penalty Notice fine?

A Penalty Notice carries a fine of £60.00 if paid within 21 days of issue, doubling to £120.00 if paid after 21 but within 28 days.

## Attendance Information

### Penalty Notices are issued per parent, per child.

Therefore, for example, if there are two parents and two children, the fines will total £240.00 if paid within 21 days and £480.00 if paid after 21 days but within 28 days.

### Can a Penalty Notice be paid in instalments?

**No.** Penalty Notices must be paid in full, within the designated dates. However, if a parent has more than one child and is therefore issued with more than one fine, they can pay the fines separately if they wish.

### Who is responsible for issuing Penalty Notices?

It is a Headteacher's decision whether or not to authorise an absence and, if their decision is not to authorise, they have the right to request a Penalty Notice in line with their attendance policy process. Cornwall Council's role is to check that the evidence submitted is compliant with Cornwall Council's Code of Conduct for Education Related Penalty Notices and, if so, to issue as appropriate.

### Can a parent appeal a Penalty Notice?

There is no statutory right of appeal once a Penalty Notice has been issued. If you believe that the Penalty Notice should not have been issued, you should make contact with the school or academy that your child attends at your very earliest convenience after receiving the Penalty Notice. If you wish to discuss the Penalty Notice procedure, you can contact Cornwall Council's Education Welfare Service on **01872 323400**, or email [educationwelfare@cornwall.gov.uk](mailto:educationwelfare@cornwall.gov.uk)

### How is a Penalty Notice paid?

Penalty Notices can be paid by card by calling the office on 01872 323400. Alternatively, payment can be made by cash or cheque at any Cornwall Council Information Service. If the 21st/28th day for payment falls on a weekend or bank holiday, payment will be accepted at the same rate on the following working day.

### What happens if a Penalty Notice is not paid?

If a Penalty Notice is not paid within the 28 days of issue (as per the dates listed on the Penalty Notice), Cornwall Council will progress the matter to the Magistrates' Court, for the offence of failing to ensure regular attendance, NOT for failure to pay the fine.

If found guilty:

- under section 444(1), it can result in the parent being fined up to £1000
- under section 444(1A), it can result in the parent being fined up to £2,500 and/or receiving a custodial sentence of up to 3 months

**Cornwall Council may also apply for costs incurred in taking the matter to court.**

### Contact us

Education Welfare Service

[educationwelfare@cornwall.gov.uk](mailto:educationwelfare@cornwall.gov.uk)

**01872 323 400**

[www.supportincornwall.org.uk/families](http://www.supportincornwall.org.uk/families)

[www.facebook.com/TFFCornwall](https://www.facebook.com/TFFCornwall)



@tffcornwall

#### If you would like this information in another format or language please contact:

Cornwall Council, County Hall,  
Treyew Road, Truro, TR1 3AY

e: [customerservices@cornwall.gov.uk](mailto:customerservices@cornwall.gov.uk)

t: 0300 1234 100



## Dates for the diary!

Monday 8 <sup>th</sup> June	<ul style="list-style-type: none"> <li>• Y1 Phonic Screening Checks begin</li> </ul>
Tuesday 9 <sup>th</sup> June	<ul style="list-style-type: none"> <li>• Y4 Sailing Lessons begin</li> </ul>
Monday 15 <sup>th</sup> June	<ul style="list-style-type: none"> <li>• Ignite Wonder – Healthy Lifestyle Week</li> <li>• KL children’s £20 challenge for 20 days start</li> <li>• Walk to School Week</li> </ul>
Tuesday 16 <sup>th</sup> June	<ul style="list-style-type: none"> <li>•Nursery &amp; Preschool Sports Day – am</li> <li>•Reception &amp; KS1 Sports Day – pm</li> <li>•New Reception families meeting 5:30pm</li> </ul>
Wednesday 17 <sup>th</sup> June	<ul style="list-style-type: none"> <li>•KS2 Sports Day – pm</li> <li>•Vision Screening – Reception classes</li> </ul>
Friday 19 <sup>th</sup> June	<ul style="list-style-type: none"> <li>•ARB Sports Day</li> </ul>
Monday 22 <sup>nd</sup> June	<ul style="list-style-type: none"> <li>• Beacon Science Week begins</li> <li>• Y6 London Residential</li> <li>• Y2 Residential Parent Meeting 3:30pm</li> <li>• SEND Parent Transition Meetings 3:30-5pm</li> </ul>
Tuesday 23 <sup>rd</sup> June	<ul style="list-style-type: none"> <li>• Y6 London Residential</li> <li>• SEND Parent Transition Meetings 3:30-5pm</li> <li>• Nursery Intake Family Meeting 3:30pm</li> <li>• Preschool Intake Family Meeting 4:30pm</li> </ul>
Wednesday 24 <sup>th</sup> June	<ul style="list-style-type: none"> <li>• Y6 London Residential</li> <li>• SEND Parent Transition Meetings 3:30-5pm</li> <li>• Bikeability – Y5 &amp; 6</li> </ul>
Thursday 25 <sup>th</sup> June	<ul style="list-style-type: none"> <li>• SEND Parent Transition Meetings 3:30-5pm</li> </ul>

## Dates for the diary!

Wednesday 1 <sup>st</sup> July	<ul style="list-style-type: none"> <li>Year 1 Truro City Adventure</li> </ul>
Thursday 2 <sup>nd</sup> July	<ul style="list-style-type: none"> <li>Y4 St Michael's Mount Visit</li> </ul>
Tuesday 7 <sup>th</sup> July – Wednesday 8 <sup>th</sup> July	<ul style="list-style-type: none"> <li>Y2 Plymouth Residential</li> </ul>
Thursday 9 <sup>th</sup> July	<ul style="list-style-type: none"> <li>Y6 Prom </li> </ul>
Friday 10 <sup>th</sup> July	<ul style="list-style-type: none"> <li>Y6 Leavers Assembly</li> <li>Annual Reports to Parents</li> </ul>
Monday 13 <sup>th</sup> July	<ul style="list-style-type: none"> <li>Ignite Wonder Growth Mindset Week</li> </ul>
Monday 20 <sup>th</sup> July	<ul style="list-style-type: none"> <li>Y2, 3, 4 &amp; 5 Growth Mindset</li> <li>BEACONFEST! And Festival Evening Entertainment</li> </ul>
Wednesday 22 <sup>nd</sup> July	<ul style="list-style-type: none"> <li>End of summer term and academic year</li> </ul>



Extra notifications 



## BEACON Breakfast Club



Open from 8:00 – 8:30 daily  
(Booking required)

Our free breakfast club operates during term time and is available to all pupils. Starting at 8:00 AM until the start of school we offer the children a selection of healthy breakfast options such as toast, cereals, fruit, water, and milk. The children will then have the opportunity to enjoy reading games puzzles and other to activities.

Sponsored  
by



FREE for all children 

**Beacon**  
Shine brightly 

BeBrave 

Believe 

BeBrilliant 

Children Hospice South West 



Sponsored by:  
 KERNOW  
COATINGS

 children's hospice  
SOUTH WEST

The brightest fun  
run for everyone!

Saturday 20 June 2026 at  
RAF St Mawgan, Newquay

Sign up today [chsw.org.uk/rainbow](https://chsw.org.uk/rainbow)



Registered Charity  
No. 1003314

BeBrave 

Believe 

BeBrilliant 

Children Hospice South West 



**Open to All**

- Senior
- Prep
- Local Community

**TRURO SCHOOL COMMUNITY DAY**

SATURDAY 20 JUNE 2026  
12.00pm - 9.00pm  
SEN & Toddler Bounce Session from 11am

TRURO SCHOOL

**Live Music and Entertainment  
Festival Food Court  
Buskers Corner  
Artisan Stalls  
and More**

**Circus Skills  
Little Eden Bounce Parc  
Swimming Pool Inflatables  
Archery and Climbing Wall  
Treasure Hunt**



[events@truroschoo.com](mailto:events@truroschoo.com)

## Parking during drop off and collection times

### Important Notice – Parking

We kindly ask all parents and carers **not to park in the Celtic Produce car park** during drop-off or collection times.

This area is required for their business operations, and your cooperation helps us maintain a positive relationship with our neighbours.

Where possible, please use areas nearby although we know parking is difficult or allow a little extra time to park considerately and walk to the school.

Thank you for your understanding and continued support.



# BeBrave

# Believe

# BeBrilliant

## Young Carers



In partnership with  
Believe in  
children  
Barnardo's

## AM I A YOUNG CARER?

If any of these sound like you,  
you may be a Young Carer...



- Practical tasks -**  
cooking, housework,  
shopping and  
gardening.
- Physical care -**  
helping the cared for  
in/out of bed, around the  
house, outside the home.
- Emotional support -**  
listening, talking and  
showing empathy.
- Personal care -**  
undressing/dressing,  
bathing, using the toilet.
- Managing the family budget -**  
paying bills, seeking benefits,  
working to contribute  
financially.
- Supporting with  
Communication -**  
Making calls, relaying needs  
to professionals, helping a  
sibling communicate.
- Dealing with Medication -**  
collecting prescriptions,  
giving medication,  
attending appointments.
- Supporting family  
members during crisis -**  
calling emergency services,  
providing emotional  
support during hospital  
visits, dealing with the  
trauma after the event.
- Looking after siblings -**  
feeding, bathing,  
dressing, homework,  
emotional support.
- Completing daily  
nursing tasks -**  
clearing peg/breathing  
tubes, personal care,  
feeding and bathing.

To find out more,  
scan the QR code



If you believe that your child is a young carer then please speak to our admin team and they will advise you as to how we can help you in school.

Or you can contact Cornwall Young Carers directly on their freephone number 01736 756655, or by emailing [kernowyoungcarers@barnardos.org.uk](mailto:kernowyoungcarers@barnardos.org.uk).

Cornwall Young Carers complete great work with the young carers in our county by aiming to support them to self-manage caring responsibilities, providing information, advice and guidance over the phone and working with schools.

They also provide direct 1-1 work with Young Carers and Young Adult Carers as well as offering activities on a regular basis and during the school holidays.



NHS

Cornwall Partnership  
NHS Foundation Trust

## MENTAL HEALTH SUPPORT TEAM **TRANSITION** ONLINE PARENT WORKSHOP

### ★ WHAT

This is an hour long online session aimed at parents and carers. The session covers how to help and support young people with the transition to secondary school.

\*Please note this group is open to parents/carers of children in Year 6 only

### ★ WHEN

Sessions are available on:

**Wednesday 10 June  
at 1.30pm**

**Monday 22 June  
at 9.30am**



### ★ HOW

To request a place, please complete the online form or scan the QR code provided:

<https://forms.office.com/e/vSiuCZikEL>





## School Terms and Holidays 2025/26

Beacon Academy

<b>September 2025</b> Mon 1 8 15 22 29 Tue 2 9 16 23 30 Wed 3 10 17 24 Thu 4 11 18 25 Fri 5 12 19 26 Sat 6 13 20 27 Sun 7 14 21 28					<b>October 2025</b> Mon 6 13 20 27 Tue 7 14 21 28 Wed 1 8 15 22 29 Thu 2 9 16 23 30 Fri 3 10 17 24 31 Sat 4 11 18 25 Sun 5 12 19 26					<b>November 2025</b> Mon 3 10 17 24 Tue 4 11 18 25 Wed 5 12 19 26 Thu 6 13 20 27 Fri 7 14 21 28 Sat 1 8 15 22 29 Sun 2 9 16 23 30				
<b>December 2025</b> Mon 1 8 15 22 29 Tue 2 9 16 23 30 Wed 3 10 17 24 31 Thu 4 11 18 25 Fri 5 12 19 26 Sat 6 13 20 27 Sun 7 14 21 28					<b>January 2026</b> Mon 5 12 19 26 Tue 6 13 20 27 Wed 7 14 21 28 Thu 1 8 15 22 29 Fri 2 9 16 23 30 Sat 3 10 17 24 31 Sun 4 11 18 25					<b>February 2026</b> Mon 2 9 16 23 30 Tue 3 10 17 24 Wed 4 11 18 25 Thu 5 12 19 26 Fri 6 13 20 27 Sat 7 14 21 28 Sun 1 8 15 22				
<b>March 2026</b> Mon 2 9 16 23 30 Tue 3 10 17 24 31 Wed 4 11 18 25 Thu 5 12 19 26 Fri 6 13 20 27 Sat 7 14 21 28 Sun 1 8 15 22 29					<b>April 2026</b> Mon 6 13 20 27 Tue 7 14 21 28 Wed 1 8 15 22 29 Thu 2 9 16 23 30 Fri 3 10 17 24 Sat 4 11 18 25 Sun 5 12 19 26					<b>May 2026</b> Mon 4 11 18 25 Tue 5 12 19 26 Wed 6 13 20 27 Thu 7 14 21 28 Fri 1 8 15 22 29 Sat 2 9 16 23 30 Sun 3 10 17 24 31				
<b>June 2026</b> Mon 1 8 15 22 29 Tue 2 9 16 23 30 Wed 3 10 17 24 Thu 4 11 18 25 Fri 5 12 19 26 Sat 6 13 20 27 Sun 7 14 21 28					<b>July 2026</b> Mon 6 13 20 27 Tue 7 14 21 28 Wed 1 8 15 22 29 Thu 2 9 16 23 30 Fri 3 10 17 24 31 Sat 4 11 18 25 Sun 5 12 19 26					<b>August 2026</b> Mon 3 10 17 24 31 Tue 4 11 18 25 Wed 5 12 19 26 Thu 6 13 20 27 Fri 7 14 21 28 Sat 1 8 15 22 29 Sun 2 9 16 23 30				

<b>Key:</b>  School Holiday  Bank Holiday  INSET Day  School open	<b>Term dates summary:</b> <b>Autumn Term (74 days)</b> 2nd September 2025 - 19th December 2025 (Half term: 27th-31st October 2025) <b>Spring Term (59 days)</b> 5th January 2026 - 2nd April 2026 (Half term: 16th - 20th February 2026) <b>Summer Term (62 days)</b> 20th April 2026 - 22nd July 2026 (Half term: 25th-29th May 2026)
---	---

Bank and Public Holidays 2025/26			
Christmas Day	25th December 2025	Easter Monday	6th April 2026
Boxing Day	26th December 2025	May Bank Holiday	4th May 2025
New Years Day	1st January 2026	Spring Bank Holiday	25th May 2026
Good Friday	3rd April 2026	Summer Bank Holiday	31st August 2026

Extra notifications 



# Nursery



Can we please remind all our Nursery families to be ready at our entrance for your child's start time. When staff have to come out and let people in, it leaves the Nursery understaffed.

Thank you for your understanding.

Start times are **8.30am** or **9.00am** and **12pm** for afternoon sessions.



**ChatHealth**  
**Parent Line 0-5**



**07312 263 423**



**ChatHealth**  
**Parent Line 5-19**



**07312 263 499**

**ChatHealth Young**  
**People 11-19**



**07312 263 096**



**ChatHealth**  
Cornwall and the Isles of Scilly

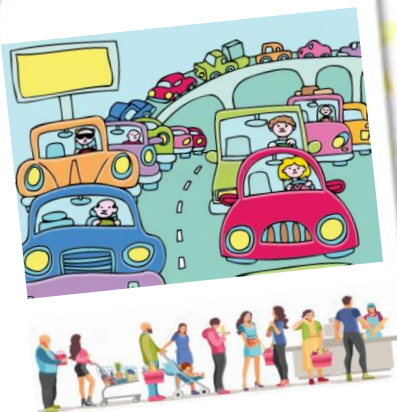
[www.cornwall.gov.uk/chathealth](http://www.cornwall.gov.uk/chathealth)

Get  
confidential  
health and  
wellbeing advice  
and support

## Extra notifications

### End of day pickups

We all experience problems from time to time collecting at the end of school day, the long queue, stuck in a traffic jam etc, so if you find the playground empty when collecting your child at the end of the day, please collect them from wraparound – situated in Spaceship class via the Y2 playground.



### Residential Trips

Please remember that payments can be made conveniently via the MyEd app, or alternatively by contacting the office.



### **Important Notice – Parking**

We kindly ask all parents and carers not to park in the Celtic Produce car park at drop-off or collection times. This area is required for their business use, and your cooperation helps us maintain a positive relationship with our neighbours.

Thank you for your understanding and support.

### A Polite Request.

If you need to get a message to your child during the school day, please call the main office before **2:30pm** to ensure the message is passed on.

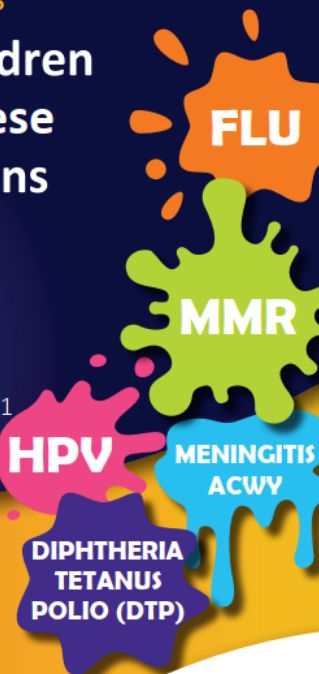




## School aged vaccinations

### Did you know children will be offered these routine vaccinations at school?

- ✓ **FLU** - Reception - Year 11
- ✓ **MMR** - Catch-up
- ✓ **HPV** - Year 8 - Year 11
- ✓ **Meningitis ACWY** - Year 9 - Year 11
- ✓ **Diphtheria, Tetanus, Polio (DTP)** - Year 9 - Year 11



### Did you miss us?

We also have community clinics across Cornwall for:

- ✓ Home educated children
- ✓ Anxious children
- ✓ Children who missed the session at school

Call us on

**01872 221105**

[Kernowhealthcic.schoolimmunisation@nhs.net](mailto:Kernowhealthcic.schoolimmunisation@nhs.net)

## Menu – Summer Term

MONDAY	TUESDAY	WEDNESDAY	THURSDAY	FRIDAY
<p>Macaroni cheese (V) with carrots and peas Tomato and basil Pasta(v)</p> <p>Fruity yoghurt dessert</p> <p>Allergens: 2,4,7</p>	<p>Sausage roll with herbed potatoes, broccoli and peas Vegetarian sausage roll (v)</p> <p>Blueberry muffin</p> <p>Allergens: 2,4,7</p>	<p>Roast turkey with carrots, broccoli and roast potatoes Quorn veggie meatloaf (v)</p> <p>Vanilla ice-cream</p> <p>Allergens: 2,4,7</p>	<p>Breaded chicken wrap, rice with green beans/carrots Breaded finger (v)</p> <p>Toffee frozen yoghurt</p> <p>Allergens: 2,4,7,14</p>	<p>Pepperoni pizza with Chips and sweetcorn or baked beans Cheese and Tomato Pizza(v)</p> <p>Various puddings</p> <p>Allergens: 2,7</p>
<p>Tomato and herb pasta bake with peas and carrots Cheesy broccoli pasta bake (v)</p> <p>Fruity yoghurt desserts</p> <p>Allergens: 2,4,7</p>	<p>Chicken burger, with wedges, broccoli and peas Vegetable burger (v)</p> <p>Strawberry ice-cream</p> <p>Allergens: 2,3,4,5,7</p>	<p>Roast beef with roast potatoes, cauliflower and parsnips Quorn veggie meatloaf(v)</p> <p>Banana and custard</p> <p>Allergens: 2,4,7</p>	<p>Spaghetti bolognese peas and sweetcorn Vegetarian bolognese(v)</p> <p>Lemon sponge</p> <p>Allergens: 2,4,7</p>	<p>Sausage, chips and peas or baked beans Veggie Sausage (v)</p> <p>Various puddings</p> <p>Allergens: 2,5,7</p>
<p>Tuna in a tomato herb pasta bake with peas and carrots Cheesy pasta bake (v)</p> <p>Fruity yoghurt dessert</p> <p>Allergens: 2,4,5,7</p>	<p>Sausage with waffles, carrots and sweetcorn</p> <p>Vegetable sausage (V)</p> <p>Chocolate Muffin</p> <p>Allergens: 2,4,7</p>	<p>Roast chicken with roast potatoes, swede and peas Quorn veggie meatloaf (v)</p> <p>Fruit salad with custard</p> <p>Allergens: 2,4,7</p>	<p>Meatballs in a tomato sauce with steamed rice, green beans and garlic bread Veggie balls (v)</p> <p>Chocolate chip cookie</p> <p>Allergens: 2,4,7,13</p>	<p>Chicken dippers chips and peas or baked beans Quorn dippers(v)</p> <p>Various puddings</p> <p>Allergens: 2,7</p>

### ALLERGENS

1 = CELERY, 2 = CEREAL CONTAINING GLUTEN, 3 = CRUSTACEANS, 4 = EGGS, 5 = FISH, 6 = LUPIN SEEDS AND FLOUR  
7 = DAIRY, 8 = MOLLUSCS, 9 = MUSTARD, 10 = NUTS, 11 = PEANUTS, 12 = SESAME SEEDS, 13 = SOYA, 14 = SULPHUR DIOXIDE

April 2026							May 2025							June 2026							July 2026						
Mon	Tue	Wed	Thu	Fri	Sat	Sun	Mon	Tue	Wed	Thu	Fri	Sat	Sun	Mon	Tue	Wed	Thu	Fri	Sat	Sun	Mon	Tue	Wed	Thu	Fri	Sat	Sun
		1	2	3	4	5					1	2	3	1	2	3	4	5	6	7			1	2	3	4	5
6	7	8	9	10	11	12	4	5	6	7	8	9	10	8	9	10	11	12	13	14	6	7	8	9	10	11	12
13	14	15	16	17	18	19	11	12	13	14	15	16	17	15	16	17	18	19	20	21	13	14	15	16	17	18	19
20	21	22	23	24	25	26	18	19	20	21	22	23	24	22	23	24	25	26	27	28	20	21	22	23	24	25	26
27	28	29	30				25	26	27	28	29	30	31	29	30						27	28	29	30	31		

Jacket potatoes with various fillings, salad bar, fruit and yoghurt available every day



**Mexican Day**

June 11<sup>th</sup> 2026

Taco filled with Mild Chilli  
Salad and Cheese  
Quorn mince (v)  
Sweetcorn  
Steamed Rice

**Mexican Rice Pudding**

Jacket Potato also available

*¡HOLA!*

The menu card features a vibrant, colorful border with floral and traditional Mexican motifs. It includes illustrations of a sombrero, a guitar, maracas, and a sombrero. The text is centered and uses a mix of bold and regular fonts. The background of the central text area is a stylized Mexican flag.



Extra notifications



## School Menus



## School Menus



SCHOOL MENU – WEEK COMMENCING

Monday 8th June

Monday	Tuesday	Wednesday	Thursday	Friday
<p>Macaroni cheese (V) with carrots and peas Tomato and basil Pasta(v)</p> <p>Fruity yoghurt dessert</p> <p>Allergens: 2,4,7,</p>  	<p>Sausage roll with herbed potatoes, broccoli and peas Vegetarian sausage roll (v)</p> <p>Blueberry muffin</p> <p>Allergens: 2,4,7,</p>  	<p>Roast turkey with carrots, broccoli and roast potatoes Quorn veggie meatloaf (v)</p> <p>Vanilla ice-cream</p> <p>Allergens: 2,4,7,</p>  	<p><b>Mexican Day</b> June 11<sup>th</sup> 2026</p> 	<p>Pepperoni pizza with Chips and sweetcorn or baked beans Cheese and Tomato Pizza(v)</p> <p>Various puddings</p> <p>Allergens: 2,7,</p>  

Please ensure you are pre-booking your dinners via the MyEd/PlusPay app.

